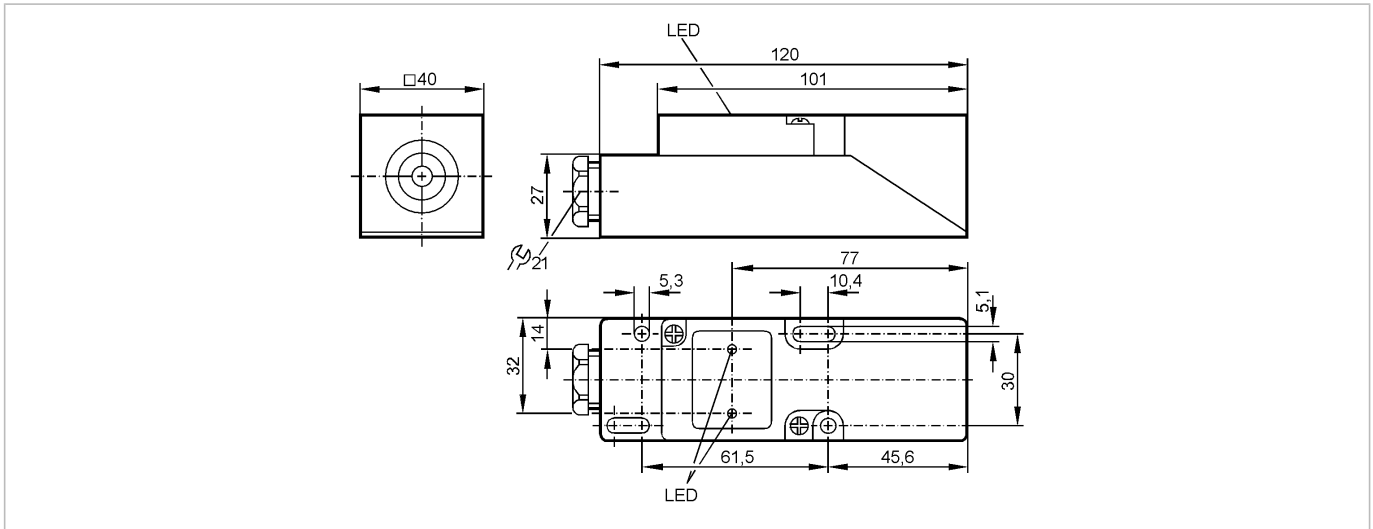


**IM5022**

IME3015BFPKG/2-LED

Inductive sensors



**Product characteristics**

Inductive sensor
Rectangular, plastics
Terminals
Sensing range 15 mm; [f] flush mountable

**Electrical data**

Electrical design	DC PNP
Operating voltage [V]	10...36 DC
Current consumption [mA]	15 (24 V)
Protection class	II
Reverse polarity protection	yes

**Outputs**

Output function	normally open / closed programmable
Voltage drop [V]	< 2.5
Current rating [mA]	250
Short-circuit protection	pulsed
Overload protection	yes
Switching frequency [Hz]	350

**Range**

Sensing range [mm]	15
Real sensing range (Sr) [mm]	15 ± 10 %
Operating distance [mm]	0...12.1

**Accuracy / deviations**

Correction factors	mild steel = 1 / stainless steel approx. 0.7 / brass approx. 0.4 / Al approx. 0.3 / Cu approx. 0.2
Hysteresis [% of Sr]	1...15
Switch-point drift [% of Sr]	-10...10

**Environment**

Ambient temperature [°C]	-25...80
Protection	IP 65

**Tests / approvals**

## IM5022

IME3015BFPKG/2-LED

Inductive sensors

EMC	EN 60947-5-2 EN 55011:	class B
MTTF	[Years]	1612

### Mechanical data

Mounting	flush mountable
Housing materials	PPE
Weight	[kg] 0.191

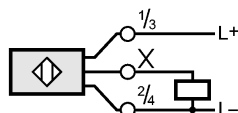
### Displays / operating elements

Output status indication	LED	yellow
Operation	LED	green

### Electrical connection

Connection	terminals up to 2.5 mm <sup>2</sup> ; cable diameter 7...13 mm, cable gland M20 x 1.5
------------	---

### Wiring



### Remarks

Pack quantity	[piece]	1
---------------	---------	---