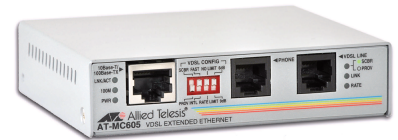


AT-MC605

Extended Ethernet™ over VDSL



AT-MC605

Subscriber/provider unit

Extended Ethernet Operation

Used as a pair, the AT-MC605 provides up to 100Mbps / 60Mbps of data transfer, while supporting POTS service over phone-grade, twisted-pair, wiring (CAT 1, 2, 3) at distances up to 3km or 10,000 feet. These units are the ideal solution for providing data on 'last-mile' twisted-pair circuits or existing in-building wiring. Standard Ethernet operation is preserved end-to-end, retaining VLAN tags, and Ethernet MAC information across the link, while higher layer protocols are passed transparently. 10/100Mbps Ethernet operation is supported simultaneously with POTS, ISDN or PBX signaling, without disruption.

MTU and MDU Applications

Multi-Tenant Units (MTU) such as offices and campuses, and Multiple Dwelling Units (MDU) such as hotels and apartments are an ideal environment for the AT-MC605 network extenders, where private phone-grade wiring can be used to provide broadband access to Internet services including video streaming, www, gaming and e-mail. There is no need to re-wire premises with expensive CAT5 or fiber to provide broadband Ethernet services.

Standalone and Rack-mount

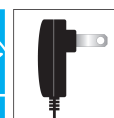
The AT-MC605 provider unit is available as a compact standalone unit for installation at the central office, or alternatively, it can be rack-mounted in the standard AT-MCRI 2 chassis from Allied Telesis, capable of housing up to twelve units in one compact chassis with a redundant power supply, simplifying wiring and minimizing space requirements.

Plug and Play Operation

Simply connect to the RJ-45 Ethernet port and the unit will automatically auto-sense and configure for 10T or 10/100TX, as well as full or half-duplex Ethernet operation. An integral POTS splitter means that existing phone services are not affected - no reconfiguration is required.

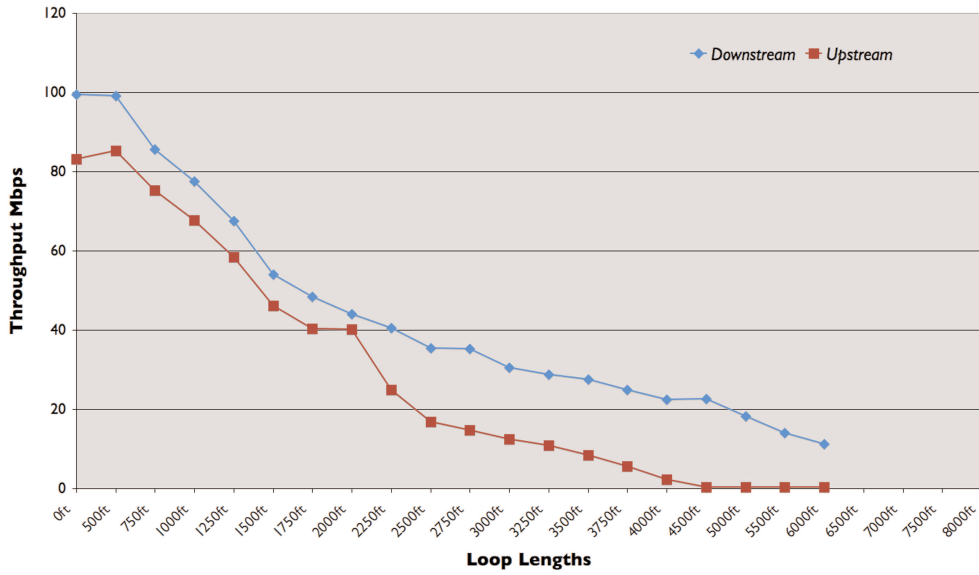
Key Features

- Up to 100Mbps / 60Mbps VDSL operation up to 3km or 10,000ft
- Can function as a subscriber or provider by flipping a switch
- Traffic shaping upstream and downstream
- Supports both fast mode and interleave mode
- Operates over category 1, 2, 3 or 5 telephone quality cabling
- 10/100 Ethernet port
- POTS port
- Integral POTS splitter
- Auto MDI/MDI-X
- Power, Ethernet activity and link LEDs
- VDSL link and rate LEDs
- Fully configurable using front panel dipswitch
- Standalone and rack-mountable
- Wall-mountable using optional AT-WLMT bracket
- Compact form factor
- Both symmetrical and asymmetrical operation
- Metal chassis
- Energy Star compliant external power adapter

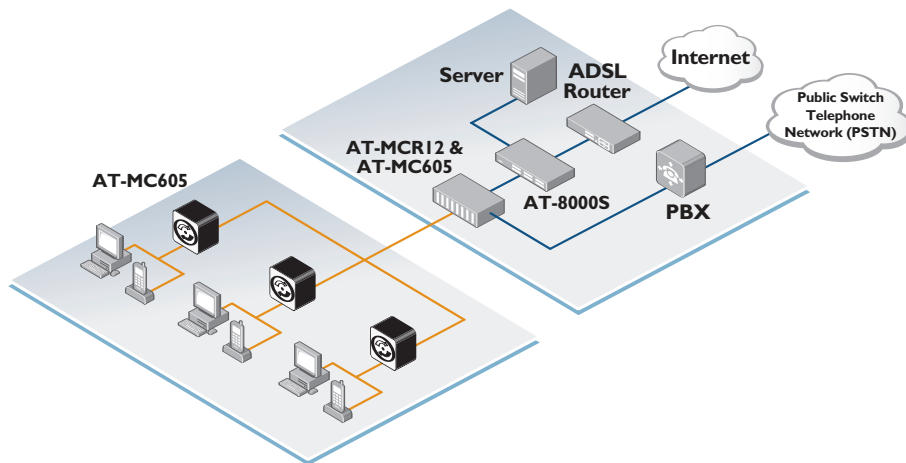
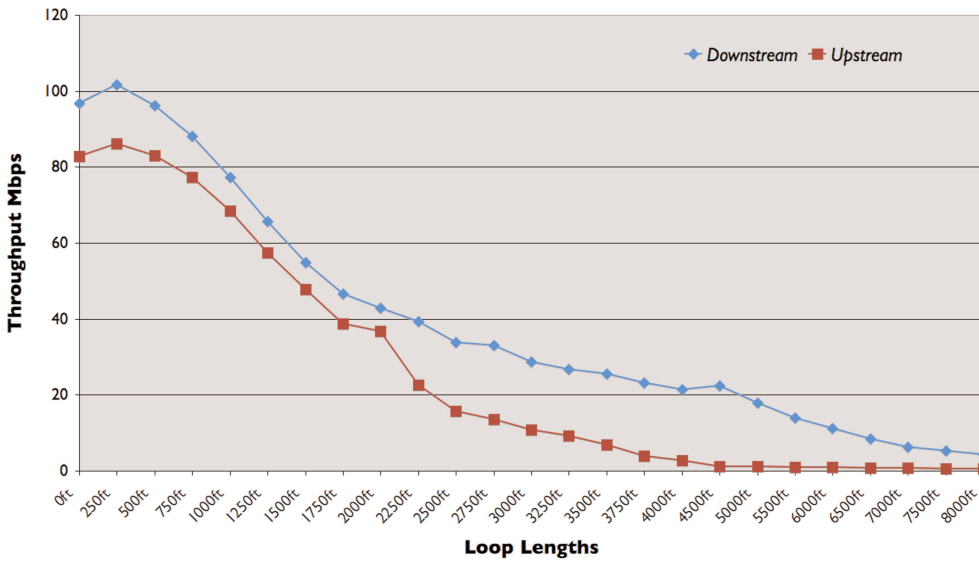


Powered by an ENERGY STAR® qualified adapter for a better environment

Typical Performance Over POTS Network



Typical Performance Over ISDN Network



AT-MC605 | Extended Ethernet over VDSL

Technical Specifications

Product Specifications

DMT modulation
Spectrally compatible with ISDN and POTS services
FDD duplexing
Datarate up to 100Mbps / 60Mbps full-duplex
4M flash
Half/full-duplex
Auto-negotiation
Auto MDI/MDI-X

Speed/Distance

Speed up to 100Mbps / 60Mbps at short distances; data throughput up to 3km or 10,000ft distances (subject to cable type)

Front Panel Indicators

System power
Ethernet link
Ethernet activity
VDSL link
VDSL rate

Interface Connections

VDSL interface RJ-11
Ethernet interface RJ-45
POTS interface RJ-11
Management 4-pin DIP switch

Reliability

MTBF 700,000 hours

Physical Characteristics VDSL Interface

Dimensions 9.5cm x 10.9cm x 2.5cm (W x D x H)
Weight 300g
Mounting Tabletop and rack-mountable*
* requires AT-MCR12 chassis

Environmental Specifications

Operating temp. 0°C – 40°C (32°F – 104°F)
Storage temp. -25°C to 70°C (-13°F to 158°F)

Relative humidity 5% to 95%, non-condensing

Operating altitude up to 10,000ft

Power Characteristics

External power supply 120V AC, 60Hz (US model)
240V AC, 50Hz (European models)
Input supply voltage 12VDC
Max current 500mA
Power consumption 4W
Energy Star compliant

Country of Origin

China

Approvals

UL 1950
FCC class B
CSA
EN 55022 class B
EN 60950 (TUV)
EN 50082-1

Ordering Information

AT-MC605-60

Subscriber/provider unit with EnergyStar multi-country power adapter.

USA Headquarters | 19800 North Creek Parkway | Suite 100 | Bothell | WA 98011 | USA | T: +1 800 424 4284 | F: +1 425 481 3895
European Headquarters | Via Motta 24 | 6830 Chiasso | Switzerland | T: +41 91 69769.00 | F: +41 91 69769.11
Asia-Pacific Headquarters | 11 Tai Seng Link | Singapore | 534182 | T: +65 6383 3832 | F: +65 6383 3830

www.alliedtelesis.com

© 2009 Allied Telesis Inc. All rights reserved. Information in this document is subject to change without notice. All company names, logos, and product designs that are trademarks or registered trademarks are the property of their respective owners.

617-000318 Rev. E