

Type: **NZM1/2-XV6**
 Article No.: **260191**



Ordering information		
Description		Max. mounting depth: 600 mm
For use with		NZM1(-4), PN1(-4), N1(-4) NZM2(-4), PN2(-4), N2(-4)

Note concerning the product

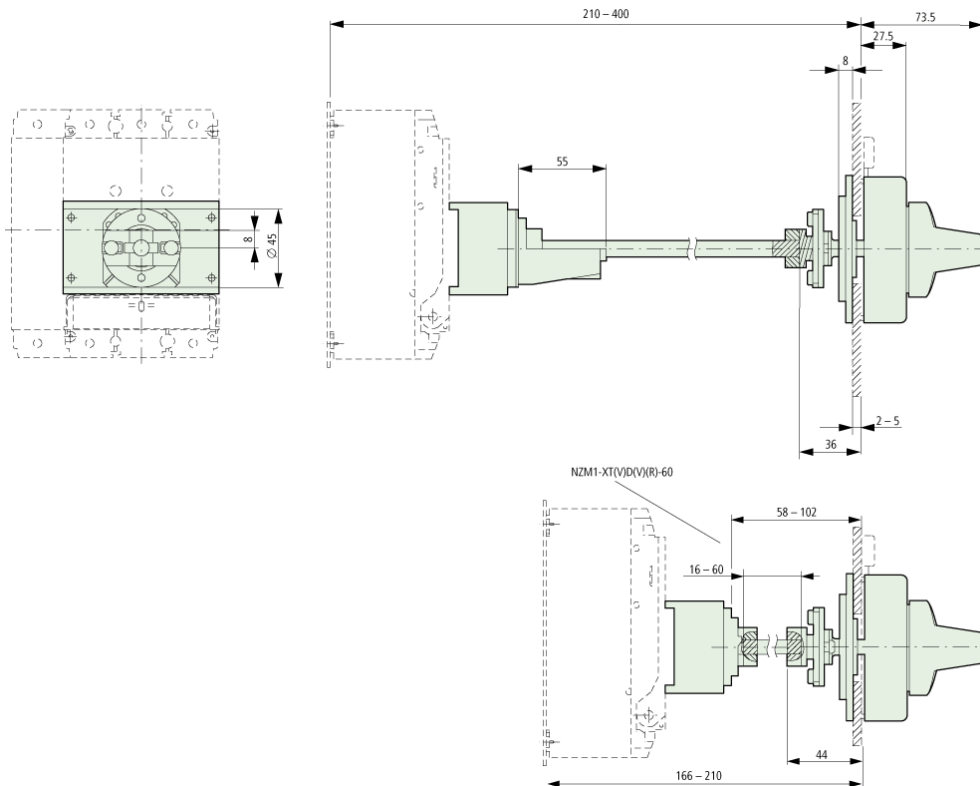
Can be cut to required length

Notes concerning the product group

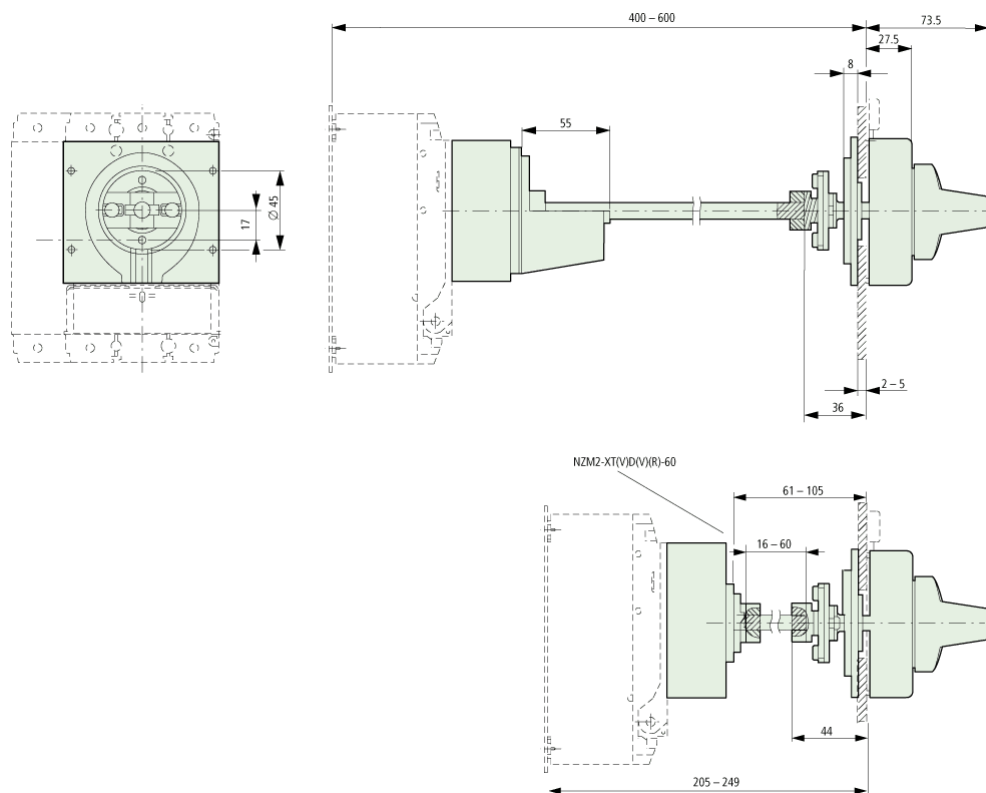
Circuit-breaker can also be installed in a lying position 90 ° left/right, with the handle still in the same position.

Dimensions		
		in connection with NZM1-XT(V)D(V)(R) door coupling rotary handle
		in connection with NZM2-XT(V)D(V)(R) door coupling rotary handle

Dimensions



Dimensions



Moeller GmbH, Hein-Moeller-Str. 7-11, D-53115 Bonn
 E-Mail: catalog@moeller.net, Internet: www.moeller.net, <http://catalog.moeller.net>
 Copyright 2006 by Moeller GmbH. Subject to modifications. HPL-C2006GB-INT V2.3