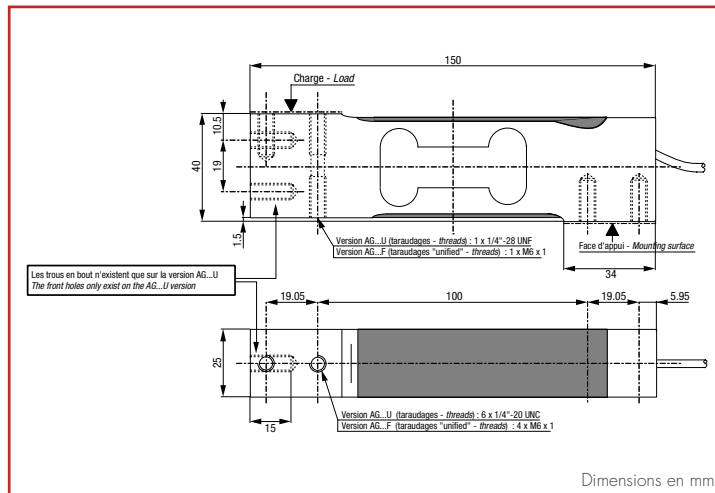
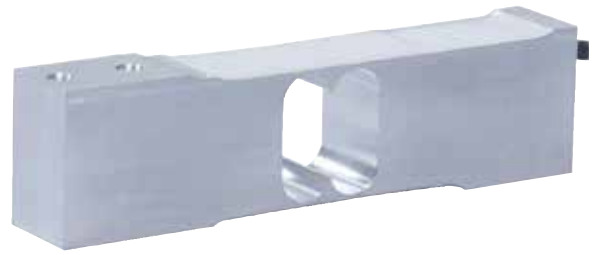


AG C3

5 kg ... 100 kg



- Aluminum construction, protection class IP65
- 3 000 d OIML R60 and 5 000 d NTEP approved
- Off-centered load compensated up to 400 x 400 mm
- Ideal for single point scales or batching/dosing machines
- Available with 1/4" - 20 UNC tapped holes: on request



Signal at FS: 2 mV/V ±10 %
 Combined error: ±0.017 %FS
 Impedance (in/out): 410 Ω ±15 / 350 Ω ±5
 Compensated temperature range: -10 ... +40°C
 Platform size: up to 400 x 400 mm
 Cable/length: 6 shielded wires / 3 m
 Warranty: 1 year

+ Excit.: Brown | + Sign.: Yellow | - Sign.: White | - Excit.: Green | + Sense: Grey | - Sense: Pink

Replaces: TH 1040/1042, HBM SP4, RT642, Celtron LOC, CAS BCA

P/N	Designation	FS	v _{min.}	DC
Approved versions OIML C3, Y = 10 000				
400755	LOAD CELL AG10 C3 SH 10e F	10 kg	1 g	R1
400756	LOAD CELL AG15 C3 SH 10e F	15 kg	1.5 g	R1
400757	LOAD CELL AG20 C3 SH 10e F	20 kg	2 g	R1
400758	LOAD CELL AG30 C3 SH 10e F	30 kg	3 g	R1
400981	LOAD CELL AG50 C3 SH 10e F	50 kg	5 g	R1
400982	LOAD CELL AG75 C3 SH 10e F	75 kg	7.5 g	R1
400983	LOAD CELL AG100 C3 SH 10e F	100 kg	10 g	R1
Approved version OIML C3, Y = 5 000: Consult us				
400716	LOAD CELL AG5 C3 SH 5e F	5 kg	1 g	R1
Options:				
850203	OPTIONAL PROTECTIVE COATING			R1
850272	"SI" TEST FOR LOAD CELLS ATEX & IECEx - Ⓢ II 1 G/D, Ex ia IIC T6 Ga, Ex ia IIIC T80°C Da, IP6X, -20°C < Ta < +60°C (zone 0/20)			R2
850273	"n" TEST FOR LOAD CELLS ATEX & IECEx - Ⓢ II 3 G, Ex nA IIC T6 Gc, -20°C < Ta < +60°C (zone 2)			R2
850274	"DUST" MARKING FOR LOAD CELL ATEX & IECEx - Ⓢ II 1 D, Ex Ia IIIC T125°C Da, IP6X, -20°C < Ta < +60°C (zones 20)			R2
850278	FACTORY MUTUAL MARKING FOR SCAIME LOAD CELLS IN HAZARDOUS AREAS			R2
	"GOSTex" TEST & MARKING FOR SCAIME LOAD CELLS IN HAZARDOUS AREAS: Consult us			
Related product:				
	SPEEDCELL AG			

FS: rated capacity / v_{min.} = minimal interval (according to cert. OIML R60) / C.E. = Combined error in % of FS / DC = Code per block