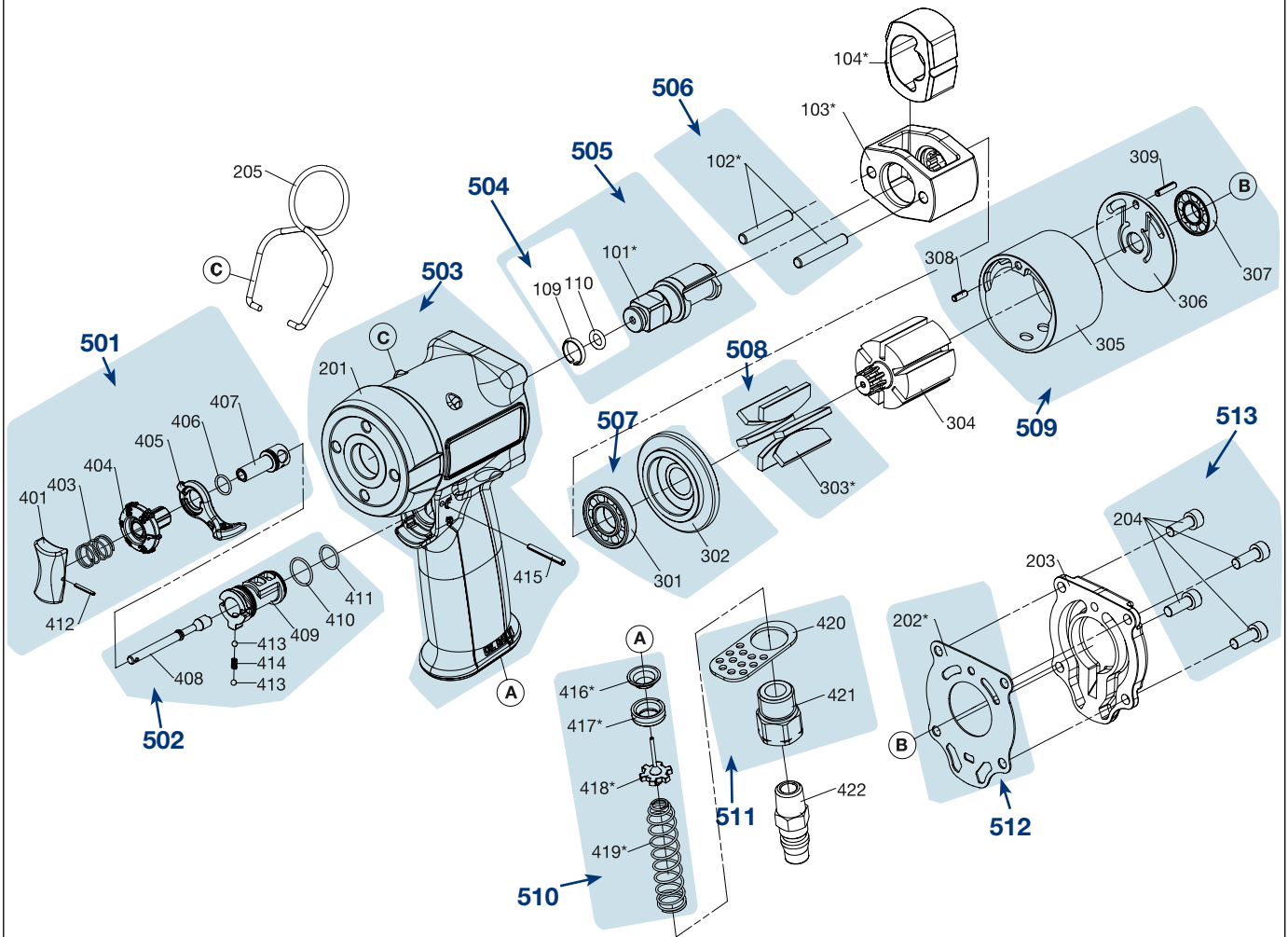






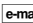
Ersatzteile 9012 M






	HAZET No.	Bezeichnung	Name	Désignation	
103	9012 M-01	Schlagwerkskorb	<i>Hammer Frame</i>	<i>Cage de mécanisme de frappe</i>	1
		Inhalt: 103	<i>Contents: 103</i>	<i>Contenu: 103</i>	
104	9012 M-02	Jumbo-Hammer	<i>Jumbo Hammer</i>	<i>Marteau Jumbo</i>	1
		Inhalt: 104	<i>Contents: 104</i>	<i>Contenu: 104</i>	
203	9012 M-03	Hinterer Gehäuseabdeckung	<i>Rear Housing Cover</i>	<i>Cover de Boîtier arrière</i>	1
		Inhalt: 203	<i>Contents: 203</i>	<i>Contenu: 203</i>	
205	9012 M-04	Haken	<i>Hook</i>	<i>Crochet</i>	1
		Inhalt: 205	<i>Contents: 205</i>	<i>Contenu: 205</i>	
304	9012 M-05	Rotor	<i>Rotor</i>	<i>Rotor</i>	1
		Inhalt: 304	<i>Contents: 304</i>	<i>Contenu: 304</i>	
501	9012 M-06/7	Abzugshebeln	<i>Trigger</i>	<i>Evier de tirage</i>	1
		Inhalt: 401, 403, 404, 405, 406, 407, 412	<i>Contents: 401, 403, 404, 405, 406, 407, 412</i>	<i>Contenu: 401, 403, 404, 405, 406, 407, 412</i>	
502	9012 M-07/7	Umschalter innen	<i>Reverse Lever inside</i>	<i>Ajusteur de tension interieur</i>	1
		Inhalt: 408, 409, 410, 411, 413 (2x), 414	<i>Contents: 408, 409, 410, 411, 413 (2x), 414</i>	<i>Contenu: 408, 409, 410, 411, 413 (2x), 414</i>	

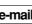
	<i>HAZET</i> No.	Bezeichnung	Name	Désignation	
503	9012 M-08/2	Gehäuse	<i>Housing</i>	<i>Boîtier</i>	1
		Inhalt: 201, 415	<i>Contents: 201, 415</i>	<i>Contenu: 201, 415</i>	
504	9012 M-09/2	Ring-Satz	<i>Ring Set</i>	<i>Jeu d'anneaux</i>	1
		Inhalt: 109, 110	<i>Contents: 109, 110</i>	<i>Contenu: 109, 110</i>	
505	9012 M-010/3	Vierkant mit Ring-Satz	<i>Anvil With Ring Set</i>	<i>Carré avec jeu d'anneaux</i>	1
		Inhalt: 101, 109, 110	<i>Contents: 101, 109, 110</i>	<i>Contenu: 101, 109, 110</i>	
506	9012 M-011/2	Stift	<i>Hammer Pin</i>	<i>Goupille</i>	1
		Inhalt: 102 (2x)	<i>Contents: 102 (2x)</i>	<i>Contenu: 102 (2x)</i>	
507	9012 M-012/2	Vorderes Lager	<i>Front Bearing</i>	<i>Palier avant</i>	1
		Inhalt: 301, 302	<i>Contents: 301, 302</i>	<i>Contenu: 301, 302</i>	
508	9012 M-013/6	Lamellen	<i>Blades</i>	<i>Lamelles</i>	1
		Inhalt: 303 (6x)	<i>Contents: 303 (6x)</i>	<i>Contenu: 303 (6x)</i>	
509	9012 M-014/5	Zylindereinheit	<i>Cylinder Unit</i>	<i>Unité de vérin</i>	1
		Inhalt: 305, 306, 307, 308, 309	<i>Contents: 305, 306, 307, 308, 309</i>	<i>Contenu: 305, 306, 307, 308, 309</i>	
510	9012 M-015/4	Ventileinheit	<i>Valve Set</i>	<i>Unité de soupape</i>	1
		Inhalt: 416, 417, 418, 419	<i>Contents: 416, 417, 418, 419</i>	<i>Contenu: 416, 417, 418, 419</i>	
511	9012 M-016/2	Lufteinlass	<i>Air Inlet</i>	<i>Admission d'air</i>	1
		Inhalt: 420, 421	<i>Contents: 420, 421</i>	<i>Contenu: 420, 421</i>	
512	9012 M-017/10	Dichtungs-Satz	<i>Gasket Set</i>	<i>Joint d'étanchéité</i>	1
		Inhalt: 202 (10x)	<i>Contents: 202 (10x)</i>	<i>Contenu: 202 (10x)</i>	
513	9012 M-018/4	Gehäuseschraube	<i>Bolt</i>	<i>Vis de boîtier</i>	1
		Inhalt: 204 (4x)	<i>Contents: 204 (4x)</i>	<i>Contenu: 204 (4x)</i>	

Zur Bestellung und für Rückfragen wenden Sie sich bitte an unsere Service-Abteilung.

 +49 (0) 21 91/7 92 355 •  +49 (0) 21 91/7 92 523 •  service-center@hazet.de

HAZET - WERK Hermann Zerver GmbH & Co. KG •  10 04 61 • D-42804 Remscheid • Germany

 +49 (0) 21 91 / 7 92-0 •  +49 (0) 21 91 / 7 92-375 (National) •  +49 (0) 21 91 / 7 92-400 (International)

www.hazet.de •  info@hazet.de