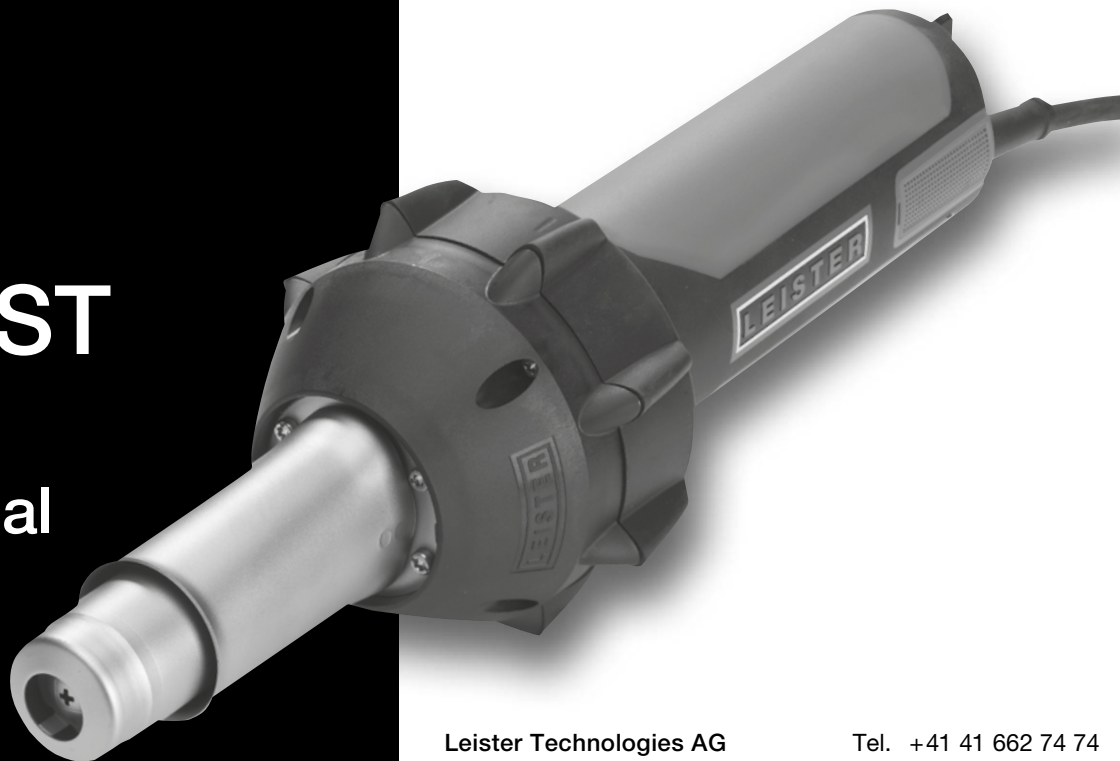


**LEISTER**

# TRIAC ST

Hot Air Tool

User Manual



Leister Technologies AG  
Galileo-Strasse 10  
6056 Kaegiswil  
Switzerland

Tel. +41 41 662 74 74  
Fax +41 41 662 74 16  
sales@leister.com  
www.leister.com

**Anwendungen**

Dieses Heissluft-Gerät eignet sich zum Schweißen und Schrumpfen thermoplastischer Kunststoffe sowie zum Aufheizen und Trocknen.

**Applications**

This hot air tool is suitable for welding and shrinking of thermoplastics as well as for heating and drying..

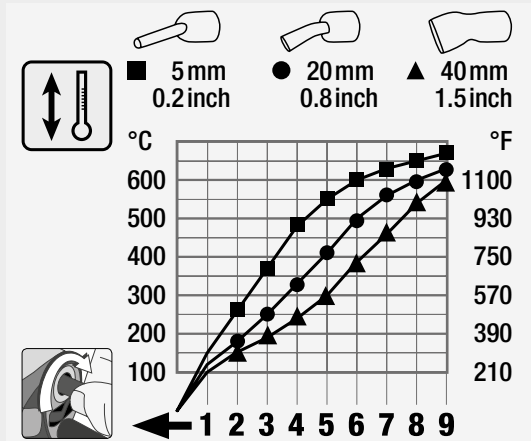
**Bedienungsanleitung vor Inbetriebnahme aufmerksam lesen und zur weiteren Verfügung aufbewahren.**

**Please read operating instructions carefully before use and keep for future reference.**



Deutsch  
English

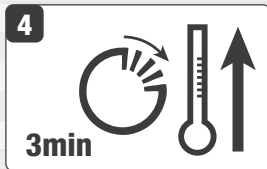
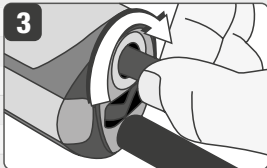
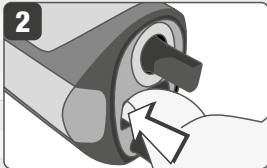
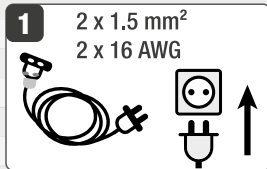
Technische Daten / Technical Data



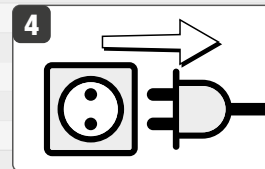
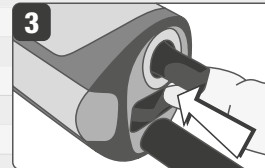
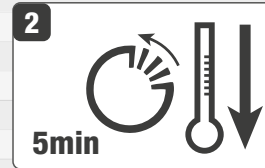
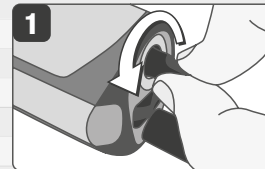
	V~	230	120	100	200
	W	1600	1600	1500	1600
	g lbs	990 2.18			
	°C °F	40 – 700 104 – 1290			
	a = ø mm / inch	90 / 3.5			
	b = mm / inch	338 / 13.3			
	c = ø mm / inch	56 / 2.2			
	l / min (20°C) cfm (68°F)	max. 240 max . 8.48			
	dB (A)	67			

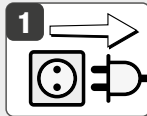
Deutsch  
English

Inbetriebnahme  
Start-up

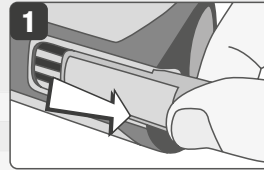
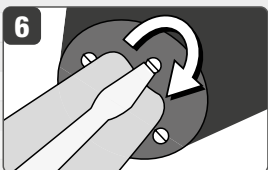
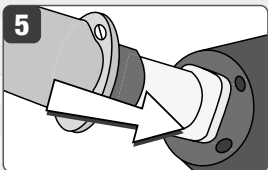
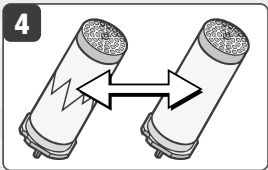
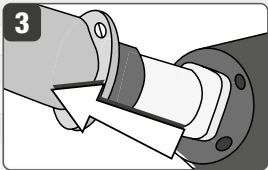
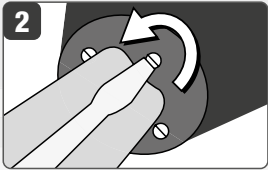


Ausschalten  
Switching Off

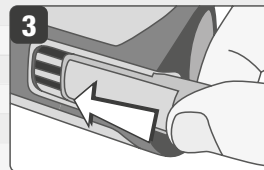
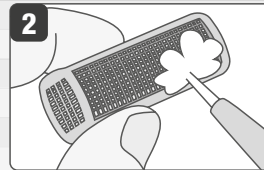




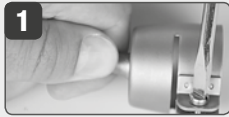
1  
Heizelement-Wechsel  
Changing heating element



1  
Luftfilter reinigen  
Cleaning air filter



Deutsch  
English



Deutsch  
English

Vor dem **Aufsetzen bzw. Wechseln der Düse** das Gerät ganz abkühlen lassen oder ein geeignetes Werkzeug benutzen.  
Before **attaching or replacing a nozzle**, allow the unit to **cool down completely** or use a suitable tool.

## Warnung



**Lebensgefahr** beim Öffnen des Gerätes, da spannungsführende Komponenten und Anschlüsse freigelegt werden. Vor dem Öffnen des Gerätes Netzstecker aus der Steckdose ziehen. Vor Inbetriebnahme Netzanschlussleitung und Stecker sowie Verlängerungskabel auf elektrische und mechanische Beschädigung überprüfen.



**Feuer- und Explosionsgefahr** bei unsachgemäßem Gebrauch von Heissluftgeräten, besonders in der Nähe von brennbaren Materialien und explosiven Gasen.



**Verbrennungsgefahr!** Heizelementrohr und Düse nicht in heissem Zustand berühren. Gerät abkühlen lassen. Heissluftstrahl nicht auf Personen oder Tiere richten.

## Vorsicht



**Nennspannung**, die auf dem Gerät angegeben ist, muss mit der Netzspannung übereinstimmen.



**FI-Schalter** beim Einsatz des Gerätes auf Baustellen ist für den Personenschutz dringend erforderlich.



Gerät **muss beobachtet** betrieben werden. Wärme kann zu brennbaren Materialien gelangen, die sich ausser Sichtweite befinden. Gerät darf nur **von ausgebildeten Fachleuten** oder unter deren Aufsicht benützt werden. Kindern ist die Benützung gänzlich untersagt.



Gerät **vor Feuchtigkeit und Nässe schützen**.



**Reparaturen** sind ausschliesslich durch eine **autorisierte Leister-Service-Stelle** ausführen zu lassen. Es dürfen **nur original Leister-Zubehör und -Ersatzteile** verwendet werden.

## Gewährleistung

- Für dieses Gerät gelten die vom direkten Vertriebspartner/Verkäufer gewährten Garantie- oder Gewährleistungsrechte ab Kaufdatum. Bei einem Garantie- oder Gewährleistungsanspruch (Nachweis durch Rechnung oder Lieferschein) werden Herstellungs- oder Verarbeitungsfehler vom Vertriebspartner durch Ersatzlieferung oder Reparatur beseitigt. Heizelemente sind von der Gewährleistung oder Garantie ausgeschlossen.
- Weitere Garantie- oder Gewährleistungsansprüche werden im Rahmen des zwingenden Rechts ausgeschlossen.
- Schäden, die auf natürliche Abnutzung, Überlastung oder unsachgemässe Behandlung zurückzuführen sind, werden von der Gewährleistung ausgeschlossen.
- Keine Garantie- oder Gewährleistungsansprüche bestehen bei Geräten, die vom Käufer umgebaut oder verändert wurden.

## Konformität

**Leister Technologies AG, Galileo-Strasse 10, 6056 Kaegiswil/Schweiz**, bestätigt, dass dieses Produkt in der von uns in Verkehr gebrachten Ausführung die Anforderungen der folgenden EU-Richtlinien erfüllt.

Richtlinien: 2006/42,  
2004/108 (bis 19.04.2016), 2014/30 (ab 20.04.2016),  
2006/95 (bis 19.04.2016), 2014/35 (ab 20.04.2016),  
2011/65

Harmonisierte EN 12100, EN 55014-1, EN 55014-2, EN 61000-6-2,  
Normen: EN 61000-3-2, EN 61000-3-3, EN 62233, EN 60335-1,  
EN 60335-2-45, EN 50581

Kaegiswil, 22.10.2015

*Bruno von Wyl*

Bruno von Wyl, CTO

*Kathrine A.*

Andreas Kathriner, GM

## Entsorgung



Elektrowerkzeuge, Zubehör und Verpackungen sollen einer umweltgerechten Wiederverwertung zugeführt werden. **Nur für EU-Länder:** Werfen Sie Elektrowerkzeuge nicht in den Hausmüll!

Deutsch

English

## Warning



**DANGER!** Danger when opening up the tool, as live components and connections are exposed. Therefore, before opening it, unplug the tool to ensure disconnection from the mains. Before putting into operation, check power supply cord and connector as well as extension cable for electrical and mechanical damage.



Incorrect use of the hot air tool (eg overheating of the material) can present a **fire and explosion hazard**, especially near combustible materials and explosive gases.



Do not touch the heating element housing, air nozzle and discharging plastizised material when they are hot as they can cause **burns**. Let the tool cool down. Do not point the hot air flow and the discharging plastizised material in the direction of people or animals.

## Caution



The **voltage rating** stated on the tool must correspond to the mains voltage.



For personal protection on building sites we **strongly recommend** the tool be connected to a **RCCB (Residual Current Circuit Breaker)**.



The tool must be operated **under supervision**. Heat can ignite flammable materials which are not in view. The machine may only be used by **qualified specialists** or under their supervision. Children are not authorized to use this machine.



Protect tool from **damp** and **wet**.



**Repairs** should only be carried out by **authorized Leister service points**. Restricted to use with **original Leister accessories and replacement parts**.

## Warranty

- For this tool, the guarantee or warranty rights granted by the relevant distributor/seller shall apply. In case of guarantee or warranty claims any manufacturing or workmanship defects will either be repaired or replaced by the distributor at its discretion. Warranty or guarantee rights have to be verified by an invoice or a delivery document. Heating elements shall be excluded from warranty or guarantee.
- Additional guarantee or warranty claims shall be excluded, subject to mandatory provisions of law.
- Warranty or guarantee shall not apply to defects caused by normal wear and tear, overload or improper handling.
- Warranty or guarantee claims will be rejected for tools that have been altered or changed by the purchaser.

## Conformity

**Leister Technologies AG, Galileo-Strasse 10, 6056 Kaegiswil/Switzerland**, confirms that this product, in the version as brought into circulation through us, fulfils the requirements of the following EC directives.

Directives: 2006/42,  
2004/108 (until 19.04.2016), 2014/30 (starting 20.04.2016),  
2006/95 (until 19.04.2016), 2014/35 (starting 20.04.2016),  
2011/65  
Harmonized Standards: EN 12100, EN 55014-1, EN 55014-2, EN 61000-6-2,  
EN 61000-3-2, EN 61000-3-3, EN 62233, EN 60335-1,  
EN 60335-2-45, EN 50581

Kaegiswil, 22.10.2015

*Bruno von Wyl*  
Bruno von Wyl, CTO

*Kathrine A.*  
Andreas Kathriner, GM

## Disposal



Electrical equipment, accessories and packaging should be recycled in an environmentally friendly way. **For EU countries only:** Do not dispose of electrical equipment with household refuse!



### Important safety instructions

This appliance has a polarized plug (one blade is wider than the other). To reduce the risk of electric shock, this plug is intended to fit in a polarized outlet only one way. If the plug does not fit fully in the outlet, reverse the plug. If it still does not fit, contact a qualified electrician. Do not modify the plug in any way.

### Read these instructions

Warning: Extreme care should be taken when stripping paint. The peelings, residue and vapors of paint may contain lead, which is poisonous. Any pre-1977 paint may contain lead and paint applied to homes prior to 1950 is likely to contain lead. Once deposited on surfaces, hand to mouth contact can result in the ingestion of lead. Exposure to even low levels of lead can cause irreversible brain and nervous system damage; young and unborn children are particularly vulnerable.

Before beginning any paint removal process you should determine whether the paint you are removing contains lead. This can be done by your local health department or by a professional who uses a paint analyzer to check the lead content of the paint to be removed. **LEAD-BASED PAINT SHOULD ONLY BE REMOVED BY A PROFESSIONAL AND SHOULD NOT BE REMOVED USING A HEAT GUN.**

### Persons removing paint should follow these guidelines:

1. Move the work piece outdoors. If this is not possible, keep the work area well ventilated. Open the windows and put an exhaust fan in one of them. Be sure the fan is moving the air from inside to outside.
2. Remove or cover any carpets, rugs, furniture, clothing, cooking utensils and air ducts.
3. Place drop cloths in the work area to catch any paint chips or peelings. Wear protective clothing such as extra work shirts, overalls and hats.
4. Work in one room at a time. Furnishings should be removed or placed in the center of the room and covered. Work areas should be sealed off from the rest of the dwelling by sealing doorways with drop cloths.

5. Children, pregnant or potentially pregnant women and nursing mothers should not be present in the work area until the work is done and all clean up is complete.
6. Wear dust respirator mask or a dual filter (dust and fume) respirator mask which has been approved by the Occupational Safety and Health Administration (OSHA), the National Institute of Safety and Health (NIOSH), or the United States Bureau of Mines. These masks and replaceable filters are readily available at major hardware stores. Be sure the mask fits. Beards and facial hair may keep masks from sealing properly. Change filters often. **DISPOSABLE PAPER MASKS ARE NOT ADEQUATE.**
7. Use caution when operating the heat gun. Keep the heat gun moving as excessive heat will generate fumes which can be inhaled by the operator.
8. Keep food and drink out of the work area. Wash hands, arms and face and rinse mouth before eating or drinking. Do not smoke or chew gum or tobacco in the work area.
9. Clean up all removed paint and dust by wet mopping the floors. Use a wet cloth to clean all walls, sills and any other surface where paint or dust is clinging. **DO NOT SWEEP, DRY DUST OR VACUUM.** Use a high phosphate detergent or trisodium phosphate (TSP) to wash and mop areas.
10. At the end of each work session put the paint chips and debris in a double plastic bag, close it with tape or twist ties and dispose of properly.
11. Remove protective clothing and work shoes in the work area to avoid carrying dust into the rest of the dwelling. Wash work clothes separately. Wipe shoes off with a wet rag that is then washed with the work clothes. Wash hair and body thoroughly with soap and water.

**SAVE THESE INSTRUCTIONS**

Your authorised sales and service center:

**Leister Technologies Deutschland GmbH**  
Rohrstr. 16, D-58093 Hagen  
Tel. +49-(0)2331-95940, Fax +49-(0)2331-959444  
info.de@leister.com - [www.leister.com](http://www.leister.com)

Leister Technologies AG is an **ISO 9001** certified enterprise.

© Copyright by Leister

**Leister Technologies AG**  
Galileo-Strasse 10  
6056 Kaegiswil  
Switzerland

Tel. +41 41 662 74 74  
Fax +41 41 662 74 16  
[sales@leister.com](mailto:sales@leister.com)  
[www.leister.com](http://www.leister.com)