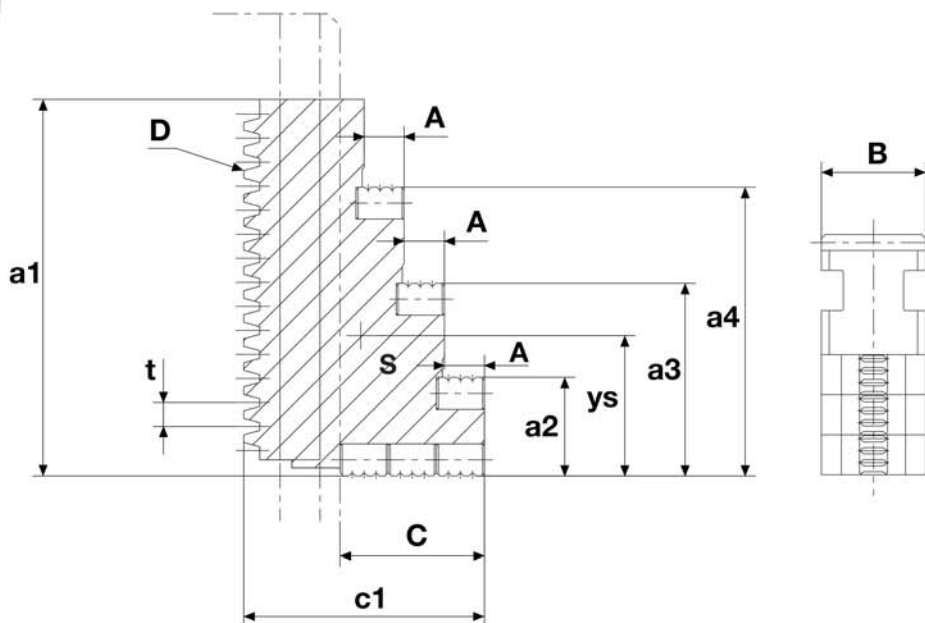
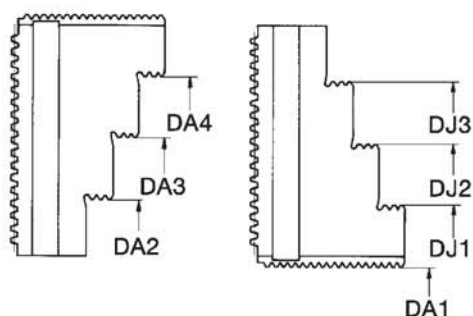


One-piece FSTB stepped jaws are hardened jaws with serrated gripping surfaces to increase the grip between the chuck jaw and the workpiece. The gripping surfaces are ground in the chuck under gripping force. These jaws are used for gripping unmachined or rough machined workpieces requiring medium cuts.



Chuck Size	Max Swing (dia)	Jaw Style	Nominal Dimension				Part No.	a1	a2	a3	a4	c1	Ys	Weight Per Jaw (kg)
			A	B	C	D								
175 - 42	234	160	7.5	20	24	F160	D1070016633	79	23	43	63	45	35.5	0.350
200 - 45	273	200	10	22	35	F200	D1070021633	94	24	48	72	60	41.0	0.615
250 - 72	346	250	14	26	40	F250	D1070026533	115	39.7	-	79.9	70	53.0	1.090
315 - 82	377	250	14	26	40	F250	D1070026533	115	39.7	-	79.9	70	53.0	1.090
400 - 92	462	315	15	32	46	F315	D1070033533	129	37.5	-	92.8	81	59.0	1.770
500 - 125	586	400	20	45	52	F400	D1070038533	167	52.5	-	113.8	93	75.5	3.600
630 - 125	690	400	20	45	52	F400	D1070038533	167	52.5	-	113.8	93	75.5	3.600

Gripping Ranges for FSTB and FHB Jaws



Chuck Size	For External Chucking				For Internal Chucking		
	DA1	DA2	DA3	DA4	DJ1	DJ2	DJ3
175 - 42	8-65	59-108	99-148	138-188	63-112	102-152	142-192
200 - 45	8-76	69-128	116-176	164-224	65-124	113-173	160-220
250 - 72	10-101	96-181	-	175-261	96-182	-	-
315 - 82	10-137	96-217	-	175-297	96-218	-	-
400 - 92	40-202	106-276	-	216-386	109-278	-	-
500 - 125	40-236	150-357	-	272-480	152-367	-	274-480
630 - 125	110-339	150-459	-	272-582	152-460	-	274-582