

**PFA9165A0025013**

[Stampa etichette scatola](#) | [Stampa etichette argentate](#) | [Italian version](#) | [Vista commerciale](#)

**Codice BA: BAA9165A001**

**Codice LB: LBA9165A001**



**UL Certification** Not present

**IP** IP 65

**Ratio** 1:25,96

**Cable clamp** PRPS0062PE

**Notes**

**Shaft**

**Code** ALL1R00001

**End side** Front

**Length (L)** 35,00 mm

**Flexible** No

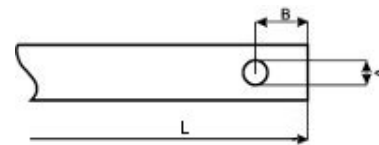
**End type** Radial hole

**Dimension A** 4,00 mm

**Dimension B** 7,00 mm



mm

mm



**Cam Set**

Codice: PRFC0009PEC

Camme		Micro
2 (60°)	 PRSL7141PI	PRSL0003XX
1 (60°)	 PRSL7141PI	PRSL0003XX

Nota: la numerazione delle camme è dal basso verso l'alto

**Anti condensation option**

**Serial numbering**

**SIL 1**

**Rialzo coperchio**

**No-drop wire**