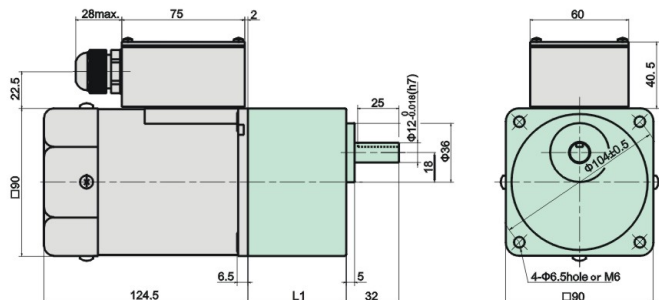


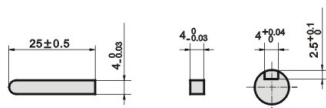
### ◇带端子箱型Terminal Box Type②

重量Weight:电动机Motor:2.85kg 减速器Gearhead :1.35kg



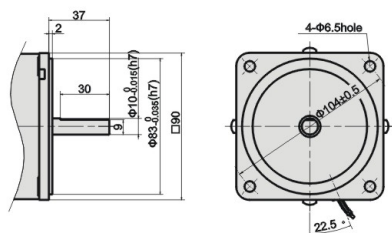
●适用电缆直径为Use cable with a diameter of  $\Phi 6 \sim \Phi 12$ mm

### ◇键·键槽(减速器附件)Key · Key Slot (The key is included with the gearhead)



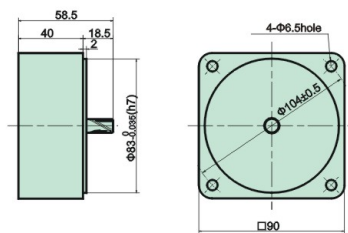
### ◇圆轴型的转轴部分Shaft Section of Round Shaft Type

除重量及轴部外,电动机外形与齿轮轴型相同。  
Excluding weight and the shaft section  
Motor shape are the same as those of the pinion shaft



### ◇中间减速器 Decimal Gearhead

可安装在GN齿轮轴型上。  
Can be connected to GN pinion shaft type  
5GN10XK  
重量weight: 0.6kg

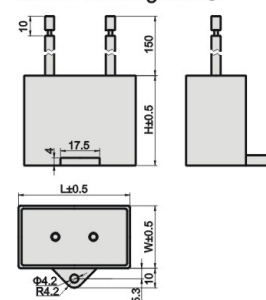


### ◇电容器外形尺寸Capacitor Dimension

型号 Model		电容器型号 Capacitor Model	L	W	H	外形图编号 Outline drawing No.
齿轮轴型 Pinion Shaft	圆轴型 Round Shaft					
5IK60GN-AF□J	5IK60A-AF□J	ZD200CFAUL	57	32	46	②
5IK60GN-EF□J	5IK60A-EF□J	ZD120CFAUL	47	26	38	①
5IK60GN-CF□E	5IK60A-CF□E	ZD40BFAUL	47	22	34	①

- 常规电容器出线为引线,也可跟据客户要求配置插片式187#  
Note: Conventional capacitor is a lead wire type.Inserted 187# is optional
- 电动机型号的□中为表示带端子箱型的记号(T)  
Enter the code that represents the terminal box type "T" in the box(□) within the model name.

外形图编号①  
Outline drawing No. ①



外形图编号②  
Outline drawing No. ②

