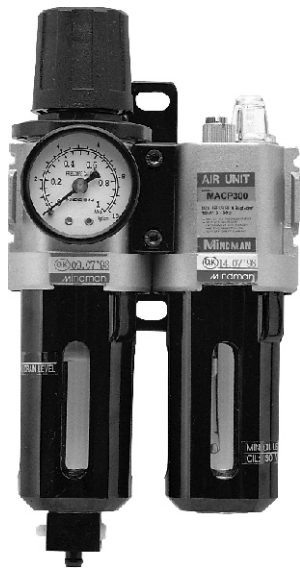
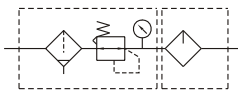


# MACP300 series

AIR UNITS (F.R.L.UNIT)



Symbol:



## Specification:

Model	MACP300	
Components	MAFR300, MAL300	
Bore No.	8A	10A
Port size	PT 1/4	PT 3/8
Medium	Air	
Operating pressure range	0~9.9kgf/cm <sup>2</sup> (0~0.99MPa)	
Test pressure	15kgf/cm <sup>2</sup> (1.5MPa)	
Regulated pressure range	0.5~8.5kgf/cm <sup>2</sup> (0.05~0.85MPa)	
Ambient temperature	-5~+60°C (No freezing)	
Filter element	Standard: 5 μm Option: 40 μm	
Lubricating oil capacity	55c.c	
Min. Flow for oil drip	50 ℓ/min	60 ℓ/min
Recommended lubricating oil	Turbine oil ISO-VG32	
Attachment	Pressure gauge (PG-40), T-type bracket	
Weight	720g	

※ Standard unit contains semi-auto-drain function when operating pressure below 0.5kgf/cm<sup>2</sup>.

Order example:

MACP300 - 8A - □ - □ - T8 - BSP

MODEL

BORE SIZE  
8A: PT 1/4  
10A: PT 3/8

D: auto drain valve  
(MADV 300)

FILTER  
ELEMENT  
Blank: 5 μm  
40u: 40 μm

Module  
mounting  
bracket  
T8: PT 1/4  
T10: PT 3/8

PORT THREAD  
Blank: PT thread  
BSP: BSP thread  
NPT: NPT thread

Flow feature:

