

SES-CX

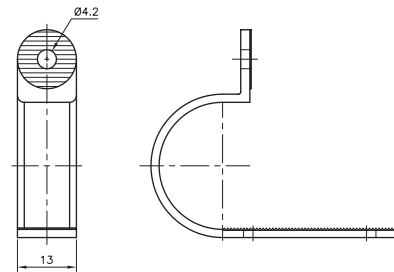
Material: polyamide 6
Colour: black
Operating temperatures: -40 à +130°C
Tensile strength at break: 45 MPa
Flame resistance: V2 UL94
Dielectric strength: 60 kV/mm
Resistance: to ageing, ozone, UV radiation and corrosion.



Applications: SES-CX moulded "P" clips can clamp a wide range of cable diameters as they are equipped with adjustable slots.



type	artide number	clamping Ø mm	
CX-6	0114 0001 010	4,5 - 6,5	100
CX-9	0114 0002 010	6 - 9	100
CX-13	0114 0003 010	7,5 - 13	100
CX-21	0114 0004 010	13 - 21	100
CX-28	0114 0005 010	21 - 28	100
CX-35	0114 0006 010	28 - 35	100



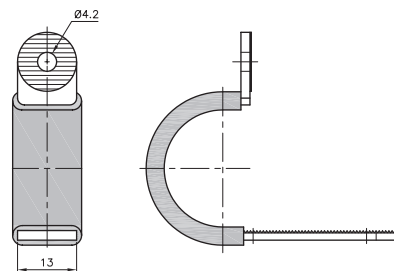
SES-CX rubber sleeved

Material: polyamide 6
Colour: black
Sleeving: polychloroprene
Operating temperatures: -30 à +90°C
Tensile strength at break: 45 MPa
Flame resistance: V2 UL94
Dielectric strength: >13 kV/mm
Resistance: to ageing, ozone, UV radiation and corrosion.

Applications: SES-CX moulded "P" clips can clamp a wide range of cable diameters as they are equipped with adjustable slots. The rubber sleeve will be found indispensable for clamping sensitive equipment or elements subjected to vibration.



type	artide number	clamping Ø mm	
CX-6 caoutchouc	0114 0021 010	2 - 5	100
CX-9 caoutchouc	0114 0022 010	4 - 7	100
CX-13 caoutchouc	0114 0023 010	7 - 11	100
CX-21 caoutchouc	0114 0024 010	10 - 17	100
CX-28 caoutchouc	0114 0025 010	14 - 24	100
CX-35 caoutchouc	0114 0026 010	22 - 32	100



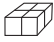


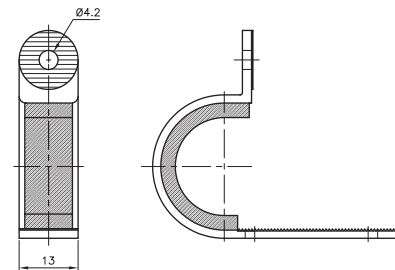
SES-CX with foam coating


Material: polyamide 6
Colour: black
Coating: polychloropren foam
Operating temperatures: -40 to +70°C
Tensile strength at break: 45 MPa
Flame resistance: V2 UL94
Dielectric strength: >13 kV/mm
Resistance: to ageing, ozone, UV radiation and corrosion.

Applications: SES-CX moulded "P" clips can clamp a wide range of cable diameters as they are equipped with adjustable slots. They will be found indispensable for clamping sensitive equipment or elements subjected to vibration.



type	artide number	clamping Ø mm	
CX-6 mousse	0114 0031 010	1 - 5	100
CX-9 mousse	0114 0032 010	2 - 7	100
CX-13 mousse	0114 0033 010	5 - 11	100
CX-21 mousse	0114 0034 010	6 - 17	100
CX-28 mousse	0114 0035 010	12 - 24	100
CX-35 mousse	0114 0036 010	20 - 30	100



 C10/30: set screws





www.klinkmann.com

HELSINKI

tel. +358 9 540 4940
info@klinkmann.fi

ST. PETERSBURG

tel. +7 812 327 3752
klinkmann@klinkmann.spb.ru

MOSCOW

tel. +7 495 641 1616
moscow@klinkmann.spb.ru

YEKATERINBURG

tel. +7 343 287 19 19
yekaterinburg@klinkmann.spb.ru

SAMARA

tel. +7 846 273 95 85
samara@klinkmann.spb.ru

UFA

tel. +7 347 293 70 04
klinkmann@klinkmann.ru

KIEV

tel. +38 044 495 33 40
klinkmann@klinkmann.kiev.ua

KAZAKHSTAN

tel. +77779994825
sales@klinkmann.kz

MINSK

tel. +375 17 200 0876
minsk@klinkmann.com

RIGA

tel. +371 6738 1617
klinkmann@klinkmann.lv

VILNIUS

tel. +370 5 215 1646
post@klinkmann.lt

TALLINN

tel. +372 668 4500
klinkmann.est@klinkmann.ee