

Magnetically operated reed switches, PM Standard type

Operating distance: Maximum 35, 70, 120mm
 Reed switch: 1NO, 2 Amps

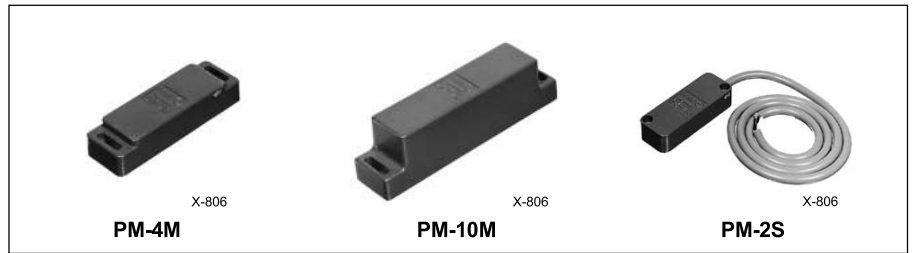
■ Features

- Power source not required
- Comprises sensing magnetic element and reed switch
- Resin molded construction
- Water- and dust-tight, shock-resistant
- Breaking capacity: 0.5Amps at 220V AC
- Operating distance is longer than oscillating type.
- Economically priced
- 1 meter color-coded lead wires

■ Ordering information

Specify the following:

1. Type number or ordering code (Specify reed switch and magnet separately.)



■ Specifications

Magnet (standard type)

Type	PM-2M	PM-4M	PM-10M
Operating distance	25 – 40mm	50 – 70mm	80 – 120mm
Differential	5 – 15mm	5 – 20mm	15 – 40mm
Ambient temperature	-10° to +65°C	-10° to +65°C	-10° to +65°C

Magnet (High temperature using type)

Type	PM-2MH	PM-4MH	PM-10MH
Operating distance	25 – 40mm	40 – 70mm	100 – 140mm
Differential	5 – 15mm	5 – 20mm	15 – 40mm
Ambient temperature	-20° to +130°C	-20° to +130°C	-20° to +130°C

PM2S, PM-2SH read switches

Rated operating voltage: 220V AC, DC (Max.)

Rated operating current: 0.5A (Max.)

Make and break capacity: 50W DC, 50VA AC (Max.)

Mechanical: durability 100 million operations

Electrical: 2 million operations at 200V AC 0.125A

1.4 million operations at 100V AC 0.25A

Insulation resistance: Over 100MΩ at 500V DC

Dielectric strength: 700V AC rms. 1 minute (Contact to contact)

Ambient temperature: -10 to +65°C (For 130°C use is also available)

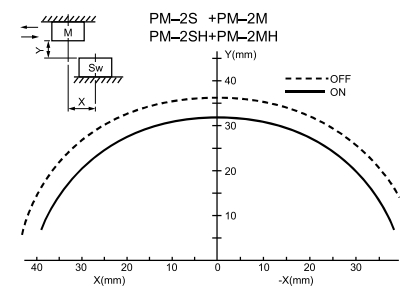
1 meter lead wires are normally provided.

■ Response curves, typical

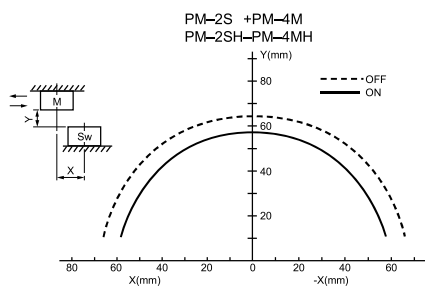
Short axis

M: Magnet

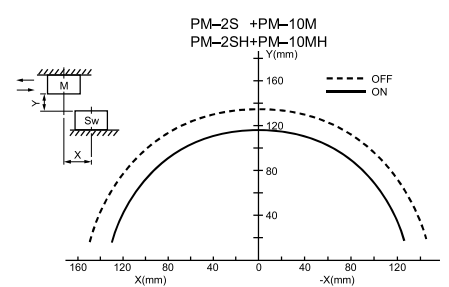
Sw: Reed switch



PM-2S



PM-2S

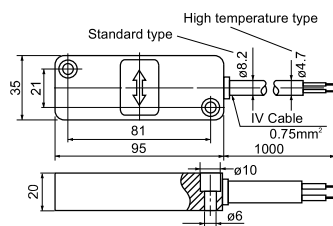


PM-2S

■ Dimensions, mm

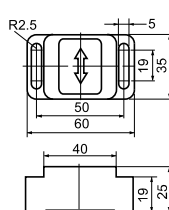
PM-2S Mass: 210g

PM-2SH



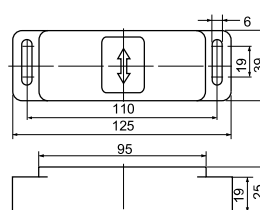
PM-2M Mass: 170g

PM-2MH



PM-4M Mass: 440g

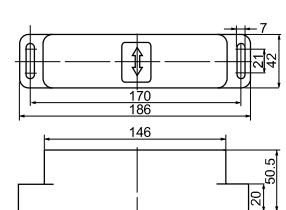
PM-4MH



PM-10M

PM-10MH

Mass: 1300g



Notes: • Reed switch and magnetic element are mounted on anti-magnetic material. The operating distance will be decreased when mounted on magnetized materials.

• Both reed switch and magnetic element cannot be used in over 5-gauss magnetic fields.

Fuji Electric FA Components & Systems Co., Ltd./D & C Catalog

Information subject to change without notice