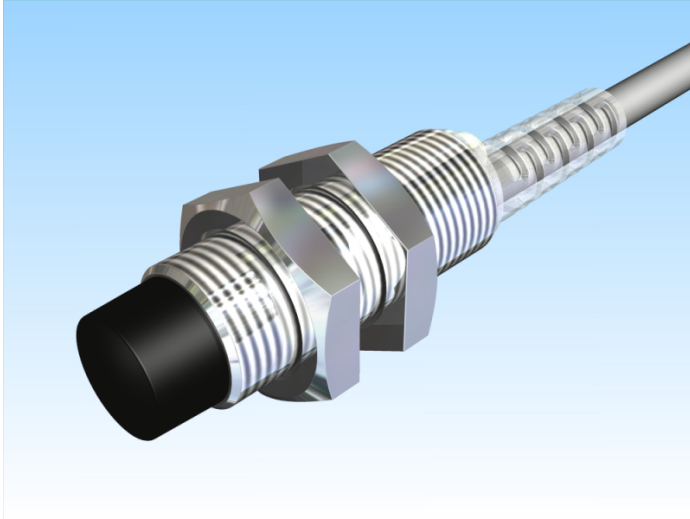
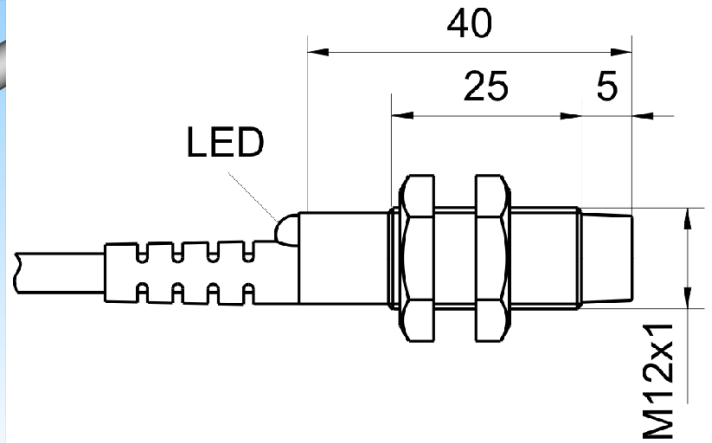


[Article Page](#)

Product Description



inductive sensor DC



Name
Order number
Matchcode
Switching distance
Mounting

KJ4-M12MN40-DPS
08317624200
9962-4000
4 mm

non shielded

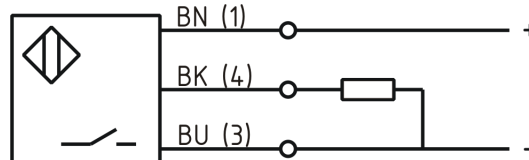
Switch type

N.O.
DC PNP

Signal Type
Connection

Cable

Connection diagramm



fine-pitch thread M12 x 40

Dimension (in mm)
Technical Specification
Operating voltage
Max. ripple
Voltage drop
Max. load current
No load current
Leakage current
Switching frequency
Switching hysteresis
Operating temperature
Temperature drift
Repeat accuracy
Switching state
Time delay
Short-circuit proof
Overload protection
Reverse voltage protection
Protection category
EMC-level
Housing material
Material active face
Utilisation category

10 - 30 VDC
≤ 10 %
2,4 V
200 mA
≤ 13 mA
≤ 10 μA
800 Hz
≤ 15 %
-25 ° C to 70 ° C
≤ 10 %
≤ 10 %
LED
300 ms
yes
yes
yes
IP67
DIN EN 60947-5-2:2008
Brass, nickel plated
PBT
DC 13



KJ4-M12MN40-DPS

Pulsotronic GmbH & Co. KG Neue Schichtstraße 14b 09366 Niederdorf Deutschland +49 (0)37296 930-200

Cable material
Termination
FIT / MTTF acc. SIEMENS 29500

PVC LIYY grau (grey)
2m PVC 3x0,34mm²
48,21 / 2368y

Errors and omissions exceptet