

8003/111-001 Art. No. 269763



- Flexible configuration due to pushbutton, mushroom push-button, mushroom stay-put button, mushroom stay-put button with key lock, key-operated button, key-operated switch
- Easy assembly thanks to single-hole mounting (D 30)
- Codable "latching", "spring return", "key not removable" functions
- Spring clamp terminals with connection chamber

WebCode **8003A**



R. STAHL Series 8003 control buttons and/or switches for panel mounting switch load, control and signal circuits up to 6 A. Depending on the type, they are complete or incomplete explosion-protected equipment with corresponding requirements for installation. As an option, various actuators are available.

### Technical Data

#### Explosion Protection

Application range (zones)	1 2 21 22
IECEX gas certificate	IECEX PTB 06.0065X
ATEX gas certificate	PTB 02 ATEX 1057 X
IECEX dust certificate	IECEX PTB 06.0065X
ATEX dust certificate	PTB 02 ATEX 1057 X
Certificate EAC	TS RU S-DE.GB04.B.00239
Gas explosion protection IECEX	Ex db eb IIC T6 Gb
Gas explosion protection ATEX	⊕ II 2 G Ex db eb IIC T6 Gb
Gas explosion protection EAC	⊕ 2 Ex d e IIC T6X
Dust explosion protection IECEX	Ex tb IIIC T80 °C Db
Dust explosion protection ATEX	⊕ II 2 D Ex tb IIIC T80 °C Db
Dust explosion protection EAC	⊕ Ex tD A21 IP65 T80 °C
Certificates	ATEX (PTB), China (CQST), EAC (STV), IECEX (PTB), India (PESO), Korea (KGS)

#### Electrical Data

Rated operational voltage AC	500 V
Rated operational current	6 A

#### Ambient Conditions

Ambient temperature	-20 °C ... +60 °C
---------------------	-------------------

#### Mechanical Data

Degree of protection (IP)	IP65
Enclosure protection type (IP) front	IP66
Enclosure protection type (IP) rear	IP65
Enclosure material	Polyamide
Contact material	Silver-nickel

8003/111-001 Art. No. 269763

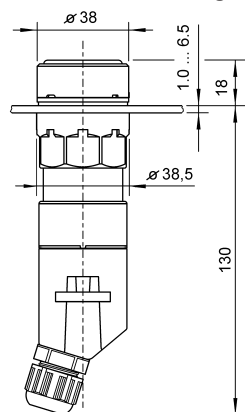
### Mechanical Data

Silicone-free	Yes
Number of NCs	1
Number of NOs	1
Conductor cross-section min.	0.75 mm <sup>2</sup>
Conductor cross-section max.	1.5 mm <sup>2</sup>
Mounting depth	130 mm
Service life, min.	100,000 operating cycles
Weight	0.14 kg

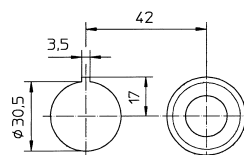
### Components

Actuator	Pushbutton
Screw connections	1 x M16 x 1.5
Entry type	Standard 8161, moulded material

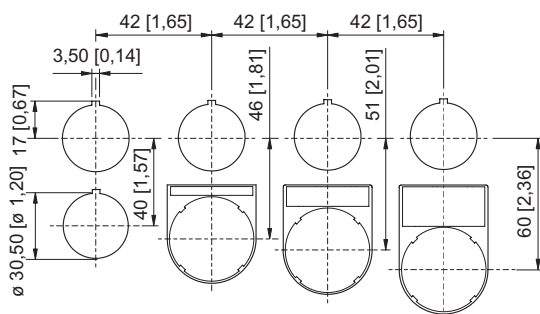
### Dimensional Drawings (All Dimensions in mm [inches]) – Subject to Alterations



Pushbutton with connection area



Drilling pattern: for aligning several devices Ø 38 mm, in a panel



Standard cut-out with / without front label

### Accessories and Spare Parts

#### Closure part

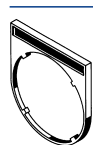


for closing of unused mounting holes Ø 30.5 mm

#### Art. No.

155329

8003/111-001 Art. No. 269763

Label mount		Art. No.
	Label mount, size 1, without symbol label Text: 1 line for actuators to fit Ø 30.5 mm holes	155632
	Label mount, size 2, without symbol label Text: 1 or 2 lines for actuators to fit Ø 30.5 mm holes	155687
	Label mount, size 3, without symbol label Text: 1, 2 or 3 lines for actuators to fit Ø 30.5 mm holes	155844

We reserve the right to make alterations to the technical data, dimensions, weights, designs and products available without notice. The illustrations cannot be considered binding.