

U46. UNI Connector Cable Gland

Brass nickel plated, Stainless steel: 1.4305, PA 6-3, PVDF, metric connecting thread EN 60 423. Type of protection: IP 68 up to 10 bar

Sealing inserts geteilt

Material	Temperature range	Art.-No. supplement
Standard: TPE	-40 °C up to +130 °C	p
TPE-V	-40 °C up to +135 °C	

Gland body

Material	Colour	Temperature range	Art.-No. supplement
Brass, nickel plated	-		d
VA 1.4305	-		2
PA 6-3	grey	-20 °C up to +100 °C	3
PVDF	transparent	-40 °C up to +105 °C	4

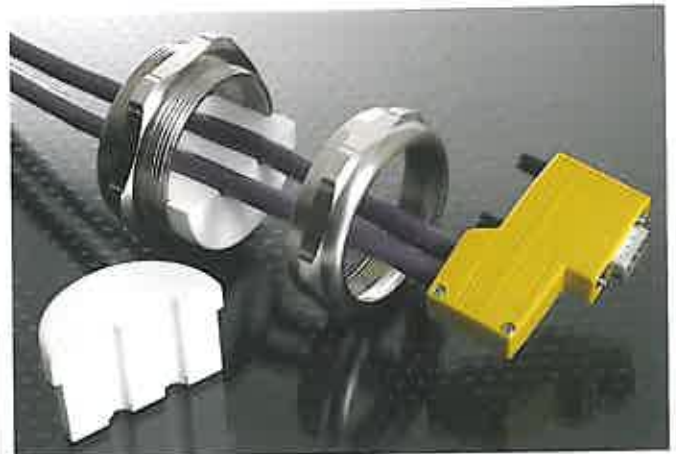


Fig. 1

25%



Fig. 2 splitted, without holes



Fig. 3 splitted in hole center line, 2 holes

Connecting thread	Art.-No.	Material	Temperature range	Art.-No. supplement	Quantity
A	M25x1,5	22553	mk (without holes)	50	
	M32x1,5	23254	mk1/ 7	25	
	M40x1,5	24055	mk (without holes)	10	
		24055	mk1/5		
		24055	mk1/ 6		
		24055	mk1/ 6-1/ 8,5		
		24055	mk1/ 7		
		24055	mk1/ 8		
		24055	mk1/10		
		24055	mk1/12		
		24055	mk1/21		
		24055	mk1/24		
		24055	mk2/ 8		
	M50x1,5	25056	mk (without holes)	5	
		25056	mk1/5-1/10-1/10,5		
	25056	mk1/ 8			
	25056	mk1/8-1/10,5-1/12			
	25056	mk1/10			
	25056	mk1/12			
	25056	mk1/21			
	25056	mk1/23			
	25056	mk1/25			
	25056	mk1/27			
	25056	mk1/4,5-1/9-1/8,5			
	25056	mk1/4-1/6-1/7-1/8			
	25056	mk2/5,5-1/11,5			
	25056	mk2/ 6			
	25056	mk2/11,5			

Order examples:

M50x1,5 brass

Group: VK 25056d

Single part: DS 156d

DN 25056d

Sealing insert TPE, splitted

E156 1/4,5-1/9-1/8,5

⇒ 1x ø4,5mm, 1x ø9mm and 1x ø8,5mm

M50x1,5 brass

complete gland with

Sealing insert TPE, splitted

25056 d mk1/4,5-1/9-1/8,5

The problem...

Equipment is frequently installed with assembled components on the connection line. Practically speaking, these lines can only be installed with divided flange plates.

UNI connectors insert sealings are available in the PFLITSCH UNI® connector system

- Full, for self-drilling with TPE drill
- With one borehole
- With several boreholes

The insert sealing is divided in the hole axis.

further until page 37