

# Kidde Fire Systems

## System Component Datasheet



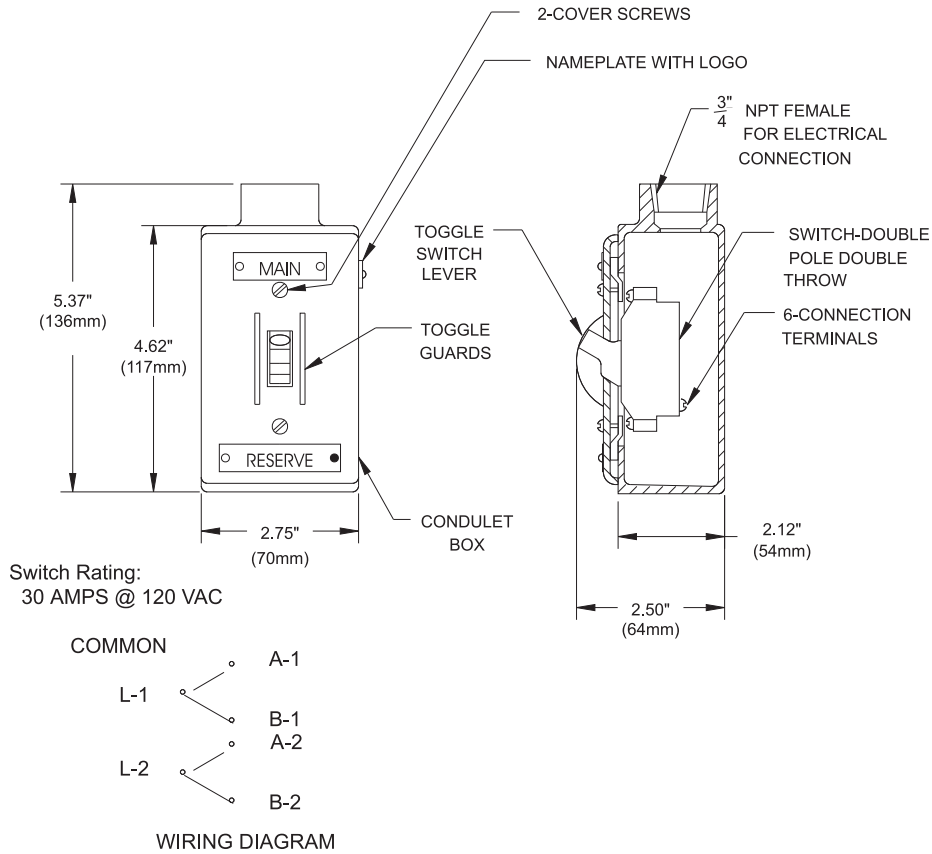
Effective: December 2018  
K-85-0531 Rev AB

### Electric Main-to-Reserve Transfer Switch

#### FEATURES

- UL Listed, ULC Listed, and FM Approved for use with systems listed in the Table , "COMPATIBILITY," on page 2.

P/N: 84-802398-000



#### MATERIALS

Conduit Box: Steel with Red Enamel Finish

Toggle Switch Lever: Bakelite

30 Amps @ 120 Vac

## COMPATIBILITY

Series	DIOM P/N
Kidde® ECS-500™ System	06-237585-001
Kidde® ECS™ with 3M™ Novec™ 1230 Fire Protection Fluid	06-236553-001
Kidde® ADS™ with 3M™ Novec™ 1230 Fire Protection Fluid	06-237256-001
Kidde® ECS™ with HFC-227ea Agent	06-236115-001
Kidde® ADS™ with HFC-227ea Agent	06-236068-001
Kidde® High Pressure CO <sub>2</sub>	81-CO2MAN-001
Kidde® FE-13™ Modular Engineered Suppression System	06-236193-001
Kidde® FE-13™ Engineered Suppression System	06-236169-002

### EXPORT INFORMATION (USA)

Jurisdiction: EAR

Classification: EAR99

This document contains technical data subject to the EAR.

KIDDE is a registered trademark of Kidde-Fenwal, Inc., or its parents, subsidiaries or affiliates.

This literature is provided for informational purposes only. KIDDE-FENWAL, INC. believes this data to be accurate, but it is published and presented without any guarantee or warranty whatsoever. KIDDE-FENWAL, INC. assumes no responsibility for the product's suitability for a particular application. Product features specified are only applicable when the fire suppression system is correctly designed, installed, maintained and serviced by trained, authorized Kidde Fire Systems distributors as per the applicable design, installation, operation, and maintenance manuals. If you need more information on this product, or if you have a particular problem or question, contact: KIDDE-FENWAL, INC., Ashland, MA 01721 USA, Telephone: (508) 881-2000.