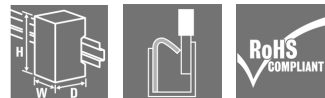


ACT20P
ACT20P-CML-10-AO-RC-P**Weidmüller Interface GmbH & Co. KG**
Klingenbergstraße 26
D-32758 Detmold
Germany
Fon: +49 5231 14-0
Fax: +49 5231 14-292083
www.weidmueller.com**Similar to illustration****ACT20P: The flexible solution**

- Precise and highly functional signal converters
- Release levers simplify handling

General ordering data

Type	ACT20P-CML-10-AO-RC-P
Order No.	2489910000
Version	Current-measuring transducer, Limit value monitoring, Signal converter/isolator, Current monitoring, Analogue output, PUSH IN connection, Input measurement range: configurable, 0...1/5/10 A AC (RMS) or DC
GTIN (EAN)	4050118499940
Qty.	1 pc(s).

Creation date March 27, 2020 11:31:53 AM CET

ACT20P
ACT20P-CML-10-AO-RC-P

Weidmüller Interface GmbH & Co. KG
Klingenbergstraße 26
D-32758 Detmold
Germany
Fon: +49 5231 14-0
Fax: +49 5231 14-292083
www.weidmueller.com

Technical data**Dimensions and weights**

Width	17.5 mm	Width (inches)	0.689 inch
Height	127.1 mm	Height (inches)	5.004 inch
Depth	114 mm	Depth (inches)	4.488 inch
Net weight	141 g		

Temperatures

Humidity	5...95 %, no condensation	Operating temperature, max.	60 °C
Operating temperature, min.	-25 °C	Storage temperature, max.	85 °C
Storage temperature, min.	-40 °C	Operating temperature	-25 °C...60 °C
Storage temperature	-40 °C...85 °C		

Environmental Product Compliance

REACH SVHC	Lead 7439-92-1
------------	----------------

Input

Number of inputs	1	Input signal	Power cable can be connected to the terminals
Input measurement range	configurable, 0...1/5/10 A AC (RMS) or DC	Input frequency	AC: 15...400 Hz (true root mean square), AC: 50 Hz (arithmetic average)

General data

Accuracy	$\leq \pm 0.3\% @ 1\text{ A} / 5\text{ A}$, $\leq \pm 0.6\% @ 10\text{ A}$	Configuration	DIP switch and potentiometer
Galvanic isolation	4-way isolator, between input / output / supply / relay	Power consumption, max.	2.2 W
Rail	TS 35	Step response time	$\leq 300\text{ ms (RMS)}$, $\leq 60\text{ ms (AA)}$
Temperature coefficient	$\leq \pm 100\text{ ppm/K @ } -25\text{...} +55\text{ °C}$, $\leq \pm 200\text{ ppm/K @ } +55\text{...} +70\text{ °C}$	Voltage supply	16.8 V...31.2 V

Insulation coordination

EMC standards	IEC 61326-1, IEC 61010-2-201	Galvanic isolation	4-way isolator, between input / output / supply / relay
Impulse withstand voltage	6 kV (1.2/50 μs)	Insulation voltage	4 kV _{eff} / 1 min.
Pollution severity	2	Rated voltage	300 V AC _{rms}
Surge voltage category	III		

Output (analogue)

Load resistance current	$\leq 600\ \Omega$	Load resistance voltage	$\geq 10\ \text{k}\Omega$
Output current	Adjustable, 0...20 mA, 4...20 mA, -20...+20 mA	Output voltage	Adjustable, 0...10 V, 2...10 V, 0...5 V, 1...5 V, -5...+5 V, -10...+10 V
Type (analogue output)	Voltage and current output (configurable)		

ACT20P
ACT20P-CML-10-AO-RC-P

Weidmüller Interface GmbH & Co. KG
 Klingenbergstraße 26
 D-32758 Detmold
 Germany
 Fon: +49 5231 14-0
 Fax: +49 5231 14-292083
 www.weidmueller.com

Technical data**Output (digital)**

Alarm function	Surge current, Under-current, Alarm delay: 0...10 s	Number of digital outputs	1
Type	Relay, 1 CO contact, normal / inverse adjustment	Max. switching voltage, DC	24 V
Max. switching voltage, AC	250 V	Rated switching current	2 A

Connection data

Type of connection	PUSH IN	Wire connection cross section AWG, min.	AWG 26
Wire connection cross section AWG, max.	AWG 14	Wire cross-section, solid, min.	0.2 mm ²
Wire cross-section, solid, max.	2.5 mm ²	Wire connection cross-section, finely stranded, min.	0.2 mm ²
Wire connection cross section, finely stranded, max.	2.5 mm ²	Wire connection cross-section, finely stranded with wire-end ferrules DIN 46228/4, min.	0.2 mm ²
Wire connection cross-section, finely stranded with wire-end ferrules DIN 46228/4, max.	2.5 mm ²		

Classifications

ETIM 6.0	EC002475	ETIM 7.0	EC002475
eClass 9.0	27-21-01-23	eClass 9.1	27-21-01-23
eClass 10.0	27-21-01-23		

Product information

Product information	<p>The device ACT20P-CML-10-AO-RC-P measures and monitors AC and DC currents of up to 10 A. The real effective value method used allows for precise measurement, even for distorted current curve shapes. The device features an integrated limit value monitoring function with an adjustable switching threshold, lag and hysteresis, as well as a relay output.</p> <p>Features</p> <ul style="list-style-type: none"> • Real effective value measurement (True RMS) or arithmetic averaging (AA) measurement • Limit value monitoring for overcurrent or undercurrent • Relay output by means of the open-circuit / closed-circuit principle • Adjustable trigger delay for filtering current peaks • Operational status and error display on a front panel LED and output signalling according to NE43, NE44, NE107 • Galvanic four-way insulation for secure isolation according to IEC/EN 61010-2-201
---------------------	--

Approvals

Approvals



Approvals	CULUS;
ROHS	Conform

Data sheet**ACT20P**
ACT20P-CML-10-AO-RC-P**Weidmüller Interface GmbH & Co. KG**
Klingenbergstraße 26
D-32758 Detmold
Germany
Fon: +49 5231 14-0
Fax: +49 5231 14-292083
www.weidmueller.com**Technical data****Downloads**

Approval/Certificate/Document of Conformity	DNV GL certification Declaration of Conformity
Engineering Data	STEP
Software	DIP switch configuration tool
User Documentation	Instruction sheet

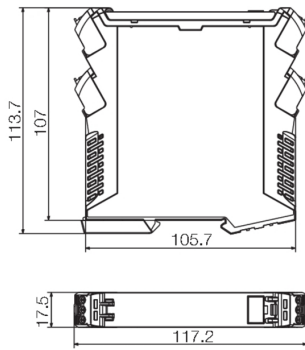
Data sheet

**ACT20P
ACT20P-CML-10-AO-RC-P**

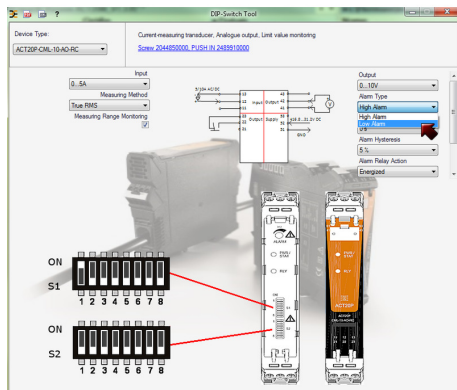
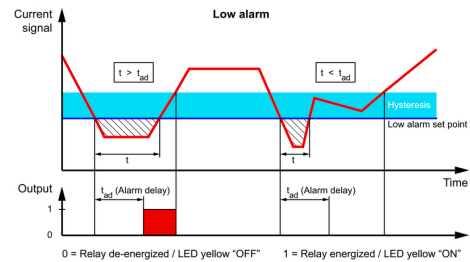
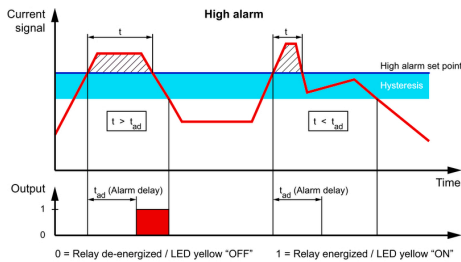
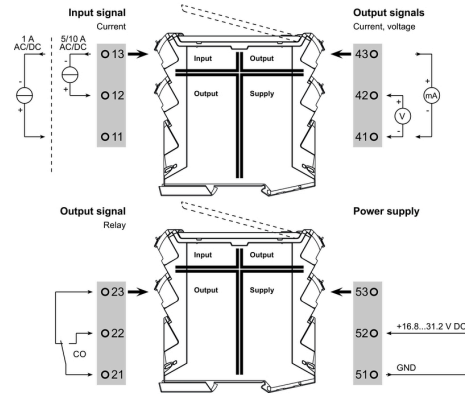
Weidmüller Interface GmbH & Co. KG
 Klingenbergstraße 26
 D-32758 Detmold
 Germany
 Fon: +49 5231 14-0
 Fax: +49 5231 14-292083
 www.weidmueller.com

Drawings

Dimensioned drawing



Connection diagram



Configuration

		DIP switch S1								DIP switch S2							
		1	2	3	4	5	6	7	8	1	2	3	4	5	6	7	8
Current input range	0...1 A									Output range	0...10 V						
	0...5 A										2...10 V						
	0...10 A										0...5 V						
Measuring method	True RMS										1...5 V						
	Arithmetic average										-5...+5 V						
Alarm delay time	0 s										-10...+10 V						
	2 s										0...+20 mA						
	5 s										4...20 mA						
	10 s										-20...+20 mA						
Measuring range monitoring	Yes									Alarm relay action	Energized						
	No										De-energized						
Output error action	Upscale									Alarm hysteresis	5 %						
	Downscale										10 %						
Transfer function	Normal									Alarm type	High alarm						
	Inverse										Low alarm						

example for DIP switch setting (with ACT20 tool)

Data sheet

ACT20P
ACT20P-CML-10-AO-RC-P

Weidmüller Interface GmbH & Co. KG
Klingenbergstraße 26
D-32758 Detmold
Germany
Fon: +49 5231 14-0
Fax: +49 5231 14-292083
www.weidmueller.com

Drawings

