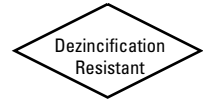


Class 125 Bronze Gate Valves

Screw-in Bonnet • Rising Stem • Solid Wedge

125 PSI/8.6 Bar Saturated Steam to 353° F/178° C
200 PSI/13.8 Bar Non-Shock Cold Working Pressure



CONFORMS TO MSS SP-80

MATERIAL LIST

| PART | SPECIFICATION |
|-------------------------|---|
| 1. Handwheel Nut | 300 Series Stainless Steel |
| 2. Identification Plate | Aluminum |
| 3. Handwheel | Malleable Iron ASTM A 47 |
| 4. Stem | Silicon Bronze ASTM B 371 Alloy C69400/C69430 or ASTM B 99 Alloy C65100 |
| 5. Packing Nut | Bronze ASTM B 62 or ASTM B584 Alloy C84400 or Brass ASTM B 16 |
| 6. Packing Gland | Bronze ASTM B 62 or ASTM B584 Alloy C84400 or Brass ASTM B16 |
| 7. Packing | Aramid Fibers with Graphite |
| 8. Bonnet | Bronze ASTM B 62 |
| 9. Body | Bronze ASTM B 62 |
| 10. Wedge | Bronze ASTM B 62 |

DIMENSIONS—WEIGHTS—QUANTITIES

| Size | Dimensions | | | | | | T-111 | | S-111 | | Master Ctn. Qty. | | |
|------|------------|------|-----|-------|-----|------|-------|-------|-------|-------|------------------|-------|-------|
| | In. | mm. | A | B | C | In. | mm. | Lbs. | Kg. | Lbs. | Kg. | T-111 | S-111 |
| † ¼ | 8 | 1.69 | 43 | 4.63 | 117 | x | x | 0.79 | 0.36 | x | x | 50 | x |
| † ⅜ | 10 | 1.69 | 43 | 4.63 | 117 | .69 | 18 | 0.76 | 0.35 | 0.70 | 0.32 | 50 | 50 |
| † ½ | 15 | 1.94 | 49 | 4.81 | 122 | .75 | 19 | 0.87 | 0.40 | 0.73 | 0.33 | 50 | 50 |
| ¾ | 20 | 2.06 | 54 | 5.81 | 148 | .88 | 22 | 1.19 | 0.54 | 1.07 | 0.49 | 50 | 50 |
| 1 | 25 | 2.44 | 62 | 7.09 | 180 | 1.00 | 25 | 1.98 | 0.90 | 1.77 | 0.80 | 30 | 30 |
| 1¼ | 32 | 2.63 | 67 | 8.13 | 206 | 1.19 | 32 | 2.66 | 1.21 | 2.52 | 1.14 | 20 | 20 |
| 1½ | 40 | 2.88 | 72 | 9.81 | 249 | 1.25 | 33 | 3.76 | 1.70 | 3.42 | 1.55 | 10 | 10 |
| 2 | 50 | 3.06 | 78 | 11.56 | 294 | 1.31 | 34 | 5.56 | 2.52 | 5.23 | 2.37 | 10 | 10 |
| 2½ | 65 | 4.13 | 105 | 14.31 | 364 | 1.81 | 46 | 10.81 | 4.90 | 9.63 | 4.37 | 4 | 4 |
| 3 | 80 | 4.50 | 114 | 16.50 | 419 | 1.94 | 49 | 15.49 | 7.02 | 13.92 | 6.31 | 2 | 4 |

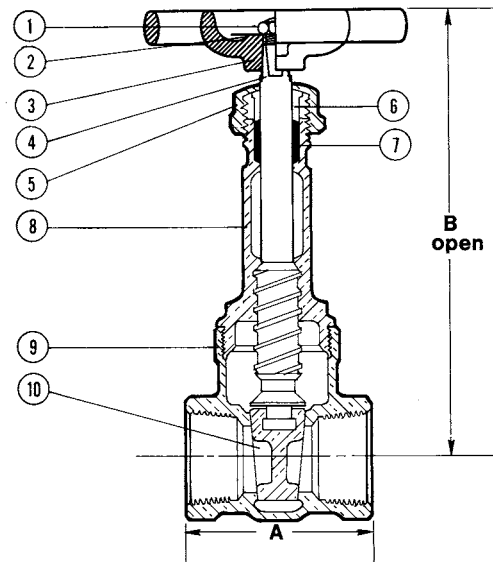
† No packing gland, packing only in these sizes.
x Not available this size.



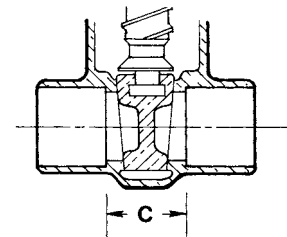
T-111
Threaded



S-111
Solder



T-111
NPT x NPT



S-111
C x C

FREEZING WEATHER PRECAUTION: Subsequent to testing a piping system, valves should be left in an open position to allow complete drainage.

◆ For detailed Operating Pressure, refer to Pressure Temperature Chart on page 114.

Visit our website for the most current information.