

The direct operated pressure relief valves series RDM are in sandwich design for easy configuration of stock systems.

They relieve the pressure of the hydraulic system to the adjusted value.

Function

PT... pressure is relieved from P to T.

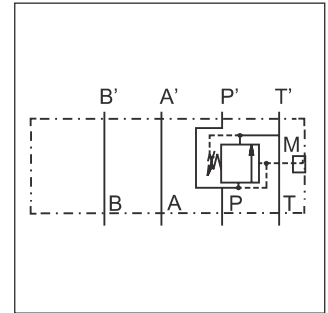
TT... pressure pre-loading in T.

Features

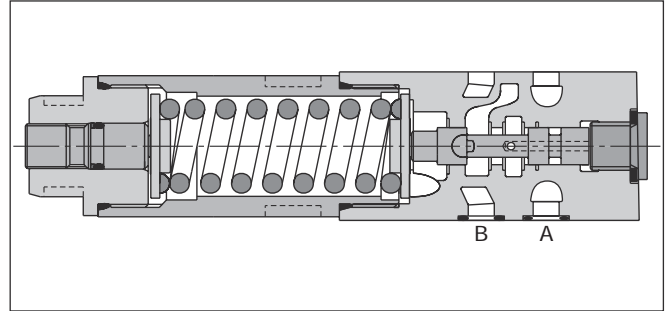
- The direct operated, cushioned piston design results in fast response, low leakage and minimal hysteresis.
- Pressure settings:
bar 25, 64, 160, 210, 350 for RDM2,
bar 19, 50, 100, 150, 210 for RDM3.
- Adjustment modes:
- Hexagon socket
- Cylinder lock
- Turning knob
- Gauge port
- RDM2 - NG06 (CETOP 03)
RDM3 - NG10 (CETOP 05)



RDM2



Example PT



RDM2

Ordering code

	RD	M				V			
	Pressure relief valve, direct operated	Manapak	Size	Pressure relief	Pressure range	Adjustment	Seal FPM	Gauge port	Design series (not required for ordering)
Code	Size							Code	Gauge port
2	NG06							G²⁾	G¹/₄
3	NG10							C	Coupling M16
Code	Pressure relief							Code	Adjustment
PT	P							S	Hexagon socket
TT ¹⁾	T							L	Cylinder lock
								K	Turning knob ³⁾
								Pressure range	
								Code	RDM2
								02	1.5 to 25 bar
								06	1.5 to 64 bar
								16	3 to 160 bar
								21	3 to 210 bar
								35	5 to 350 bar
								Code	RDM3
								01	1.5 to 19 bar
								05	1.5 to 50 bar
								10	3 to 100 bar
								15	3 to 150 bar
								21	3 to 210 bar

**Bold letters =
Short-term availability**

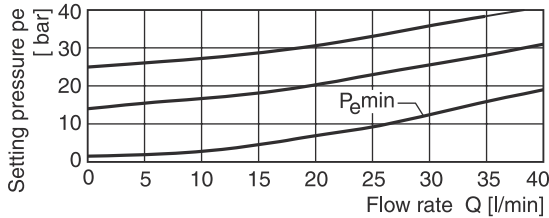
¹⁾ NG06 only, max. 160 bar.
²⁾ Standard in housing.
³⁾ NG06 only.

Technical data

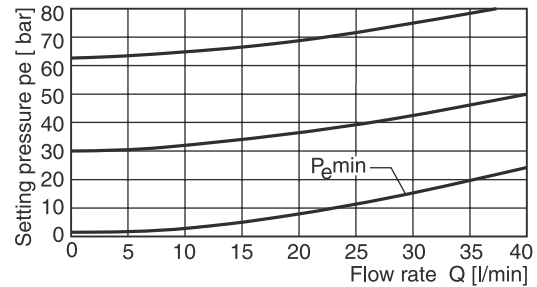
General			RDM2	RDM3
Series			RDM2	RDM3
Size			NG06	NG10
Mounting interface			ISO 4401	
Weight	[kg]		1.3	2.6
MTTF _D value	[years]		150	
Ambient temperature	[°C]		-20...+60	
Hydraulic				
Max. operating pressure	P, A, B [bar]		350	315
	T [bar]		50	10
Fluid			Hydraulic oil according to DIN 51524	
Fluid temperature	[°C]		-20...+70	
Viscosity	permitted	[cSt] / [mm ² /s]	20 ... 400	
	recommended	[cSt] / [mm ² /s]	30 ... 80	
Filtration			ISO 4406 (1999); 18/16/13	
Max. flow	[l/min]		40	80

Performance curves

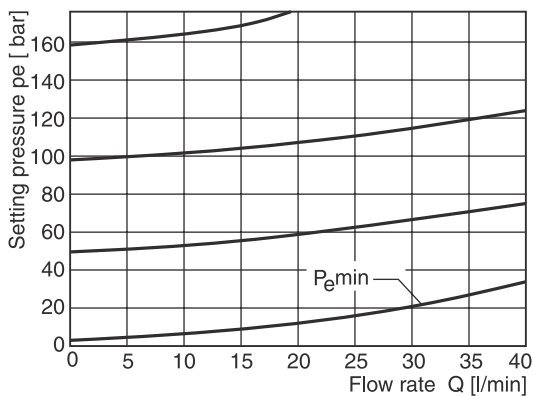
RDM2 02



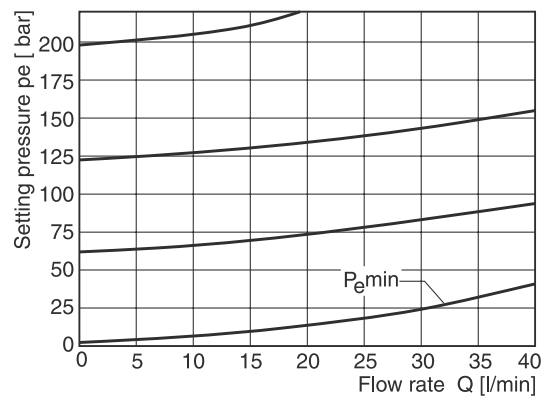
RDM2 06



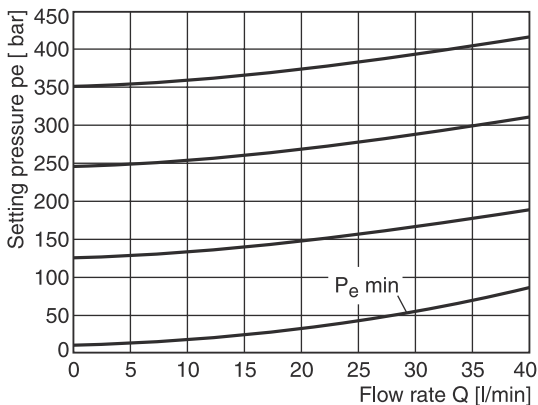
RDM2 16



RDM2 21

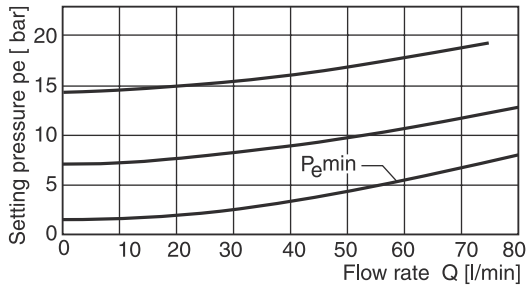


RDM2 35

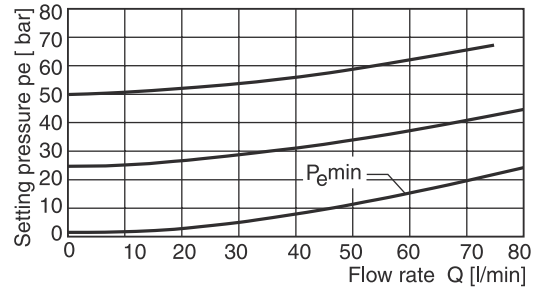


All characteristic curves measured with HLP46 at 50 °C.

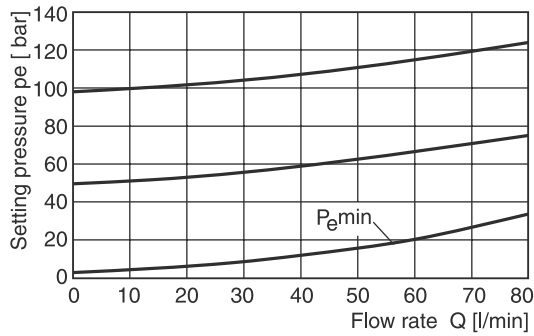
RDM3 01



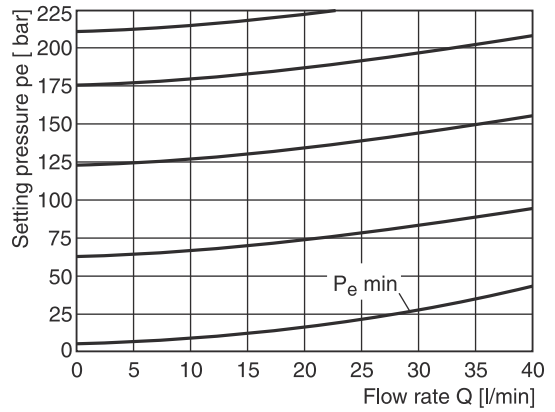
RDM3 05



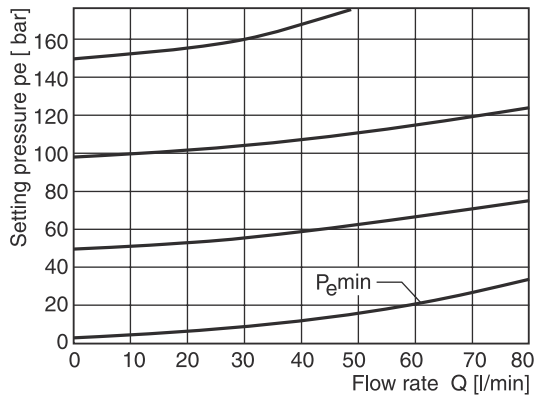
RDM3 10



RDM3 21



RDM3 15

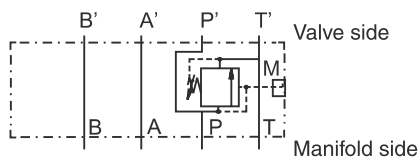


All characteristic curves measured with HLP46 at 50 °C.

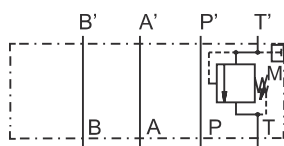
7

Schematics

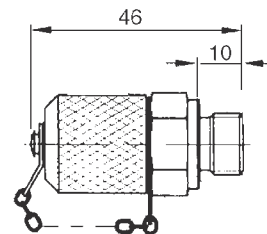
RDM*PT



RDM*TT

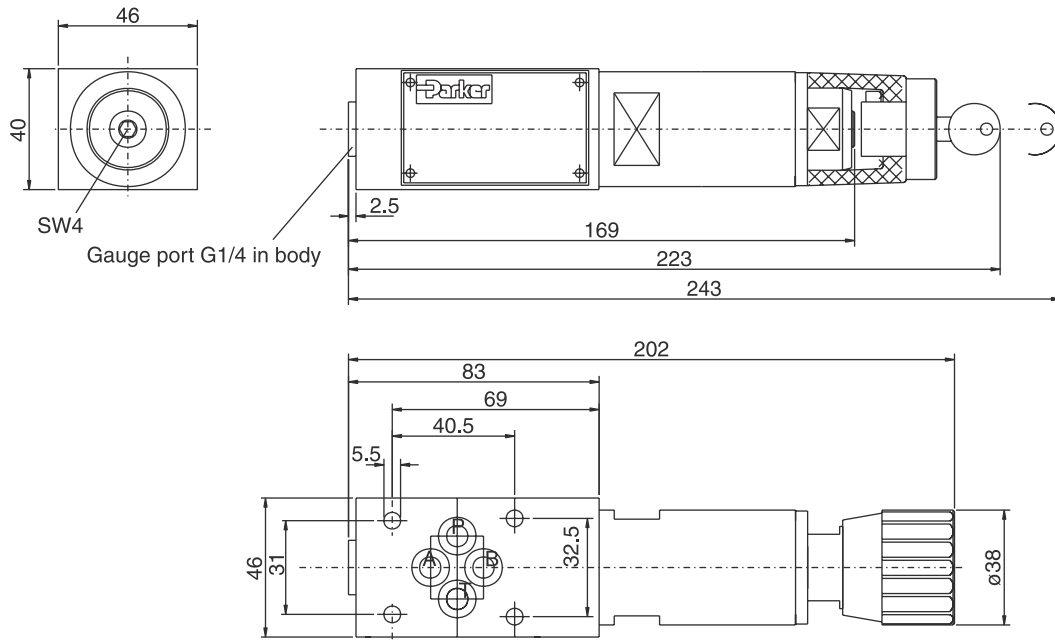


Gauge port option C

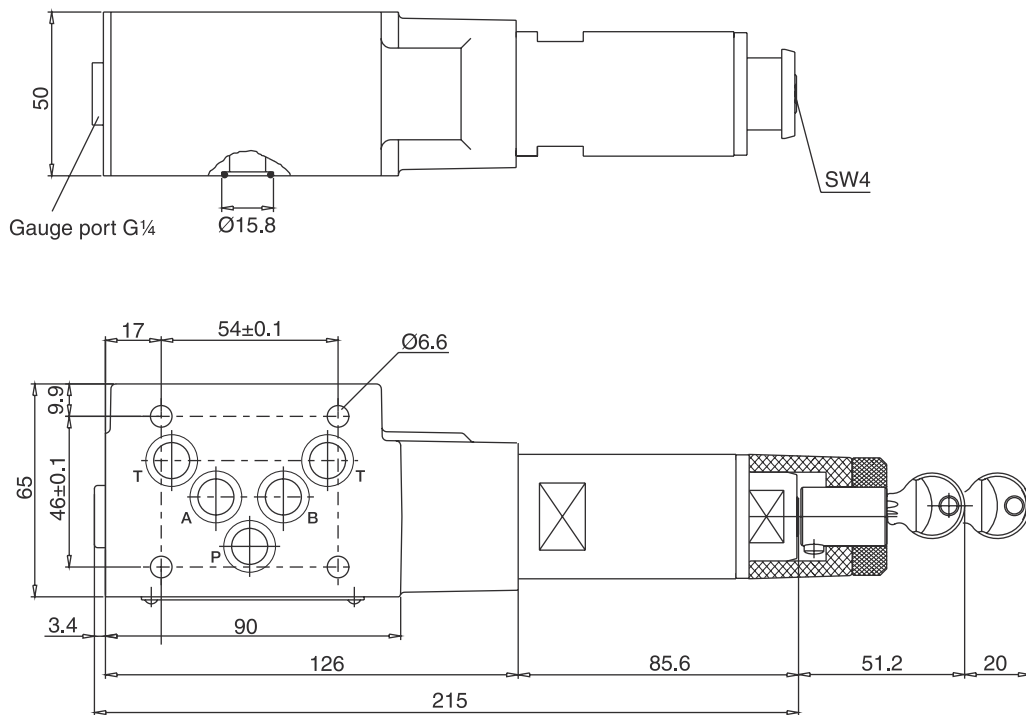


Dimensions

RDM2



7 RDM3



Seal kit order code		
Seal	RDM2	RDM3
V	SK-RDM2-V	SK-RDM3-V

