

VACUUM TOILET

5435014 DISCHARGE VALVE

5435015 DISCHARGE VALVE

P/N 43501.3 and P/N 5435013 are replaced by P/N 5435014

P/N 5435015 Discharge valve (see diagram below).

P/N 5435014 Discharge valve includes Discharge valve P/N 5435015 + Hose (L = 210 mm) P/N 5736314.

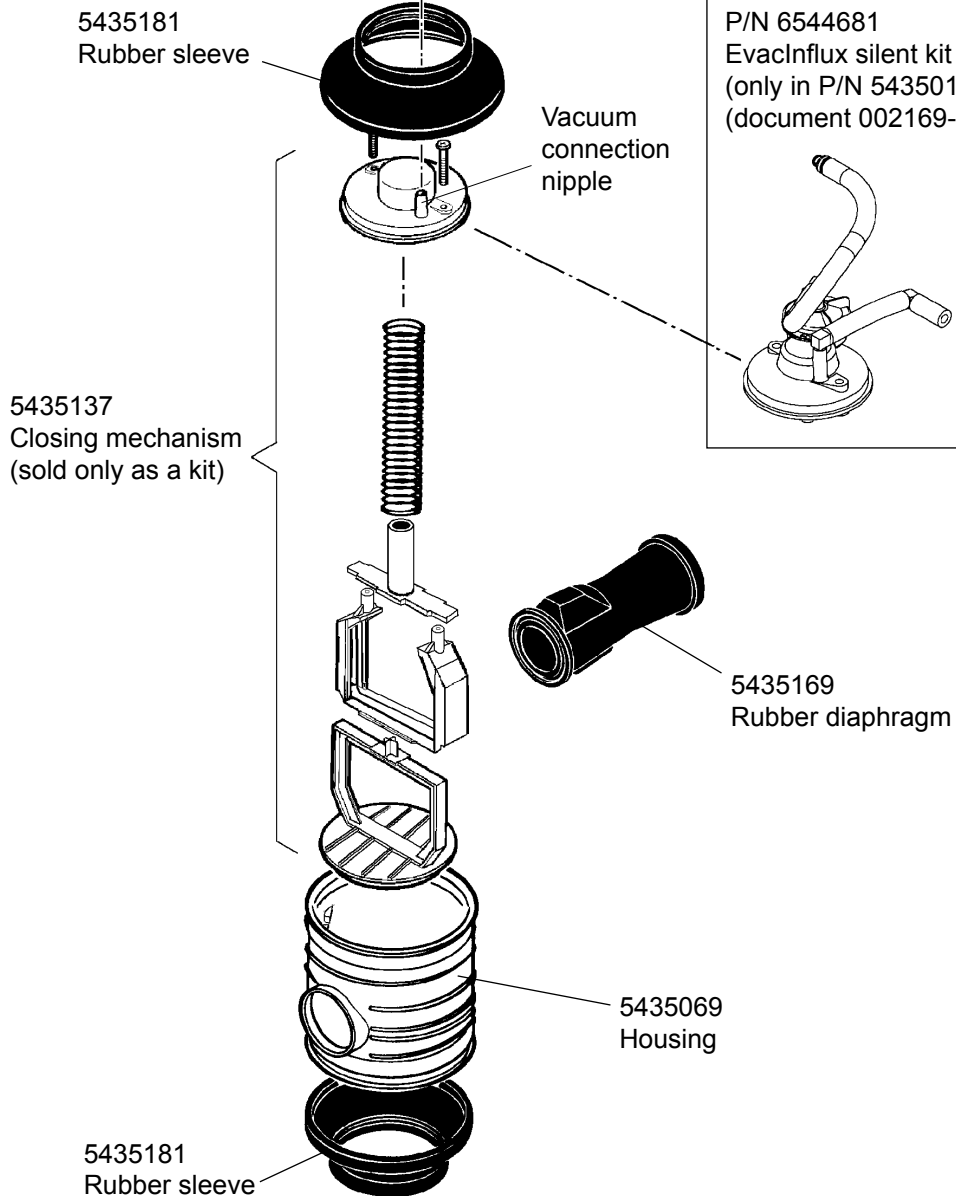
6543029 RECOMMENDED SPARE PART KIT:

- 1 x 5435169 Rubber diaphragm
- 2 x 5435181 Rubber sleeve

5736314
Hose (only in P/N 5435014)

RECOMMENDED SPARE PART KIT (only for toilets):

P/N 6544681
EvacInflux silent kit
(only in P/N 5435015)
(document 002169-3)



VACUUM TOILET

5779210 DISCHARGE VALVE ASSEMBLY FOR EVAC 90 TOILETS, (not sold as a single item)

P/N 5779210 is replaced by P/N 6544801
P/N 5434562 is replaced by P/N 6541056

