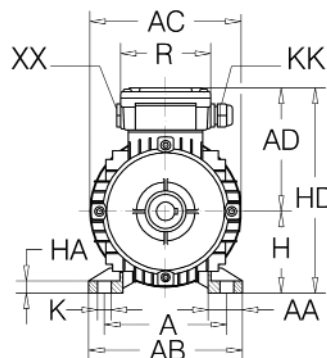
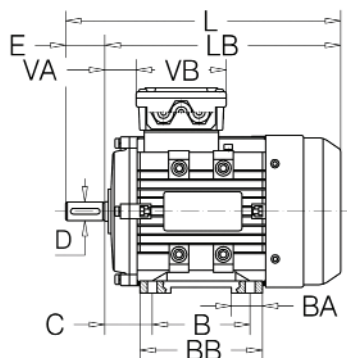
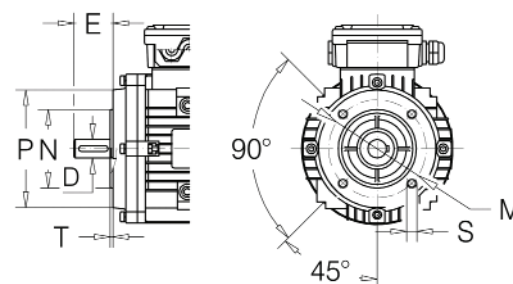
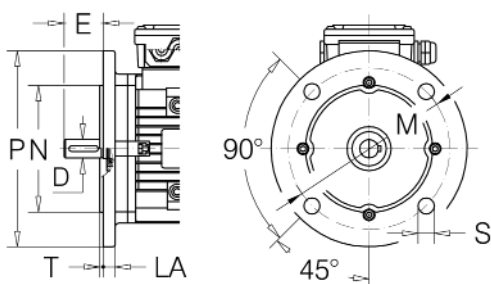
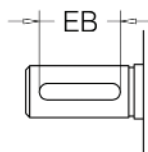
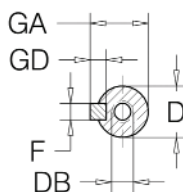


3 DIMENSIONI E NORMALIZZATI
3.1 Serie JM trifase
3 DIMENSIONS AND STANDARDIZED
3.1 JM Series three-phase
B3

B5

B14

 Estremità d'albero
 Shaft end


Dis. 3.1 / Draw. 3.1

Tab. 3.1 / Tab. 3.1

Motore Motor JM	Ingombri principali Main overall dimensions							Piedi Feet							Flangia Flange							
	AC	AD	H	HD	LB	L	A	B	C	AB	BB	AA	BA	HA	K	IM	M	N	P	LA	T	S
80 2-4	158	129	80	209	250	290	125	100	50	157	125	35	31	8	10x14	B5	165	130	200	12	3,5	12
																B14	100	80	120	-	3	M6
90 S L 2-4-6	175	140	90	230	275	325	140	100	56	173	125	37	31,5	10	10x14	B5	165	130	200	12	3,5	12
					300	350		125			150		B14			115	95	140	-	3	M8	
100 L 2-4-6	198	156	100	256	338	398	160	140	63	196	172	40	39	11	12x16	B5	215	180	250	13	4	14,5
																B14	130	110	160	-	3,5	M8
112 M 2-4-6	219	166	112	278	387	447	190	140	70	227	180	41	43	12	12x16	B5	215	180	250	14	4	14,5
																B14	130	110	160	-	3,5	M8
132 S M 2-4-6	258	188	132	320	395	475	216	140	89	262	186	51	46	15	12x16	B5	265	230	300	14	4	14,5
					433	513		178			224		51			46	15	12x16	B14	165	130	200
160 M L 2-4-6	315	242	160	402	449	609	254	210	108	304	260	55	50	18	15x18	B5	300	250	350	15	5	18,5
					493	653		254			304		55			50	18	15x18	B14	215	180	250

Tab. 3.2 / Tab. 3.2

Motore Motor JM	Estremità d'albero Shaft-end							Tenute sull'albero Shaft-seals						Scatola - Morsettiera Terminal - Box					
	D	DB	E	GA	F	GD	EB	Øi	Øe	H	Øi	Øe	H	N°-Ø	N°-KK	N°-XX	VA	VB	R
80 2-4	19	M6x16	40	21,5	6	6	30	20	35	7	18	30	7	6-M4	1-M25x1,5	1 tappo plug	25	101	101
90 S L 2-4-6	24	M8x19	50	27	8	7	40	25	40	7	23	33	8	6-M4	1-M25x1,5	1 tappo plug	25	109	109
100 L 2-4-6	28	M10x22	60	31	8	7	50	30	47	7	28	43	8	6-M4	1-M25x1,5	1 tappo plug	25	109	109
112 M 2-4-6	28	M10x22	60	31	8	7	50	30	47	7	28	43	8	6-M5	2-M25x1,5	--	34	117,5	117,5
132 S M 2-4-6	38	M12x28	80	41	10	8	65	40	62	7	38	57	8	6-M5	2-M32x1,5	--	43	117,5	117,5
160 M L 2-4-6	42	M16x36	110	45	12	8	90	45	62	12	43	55	8	6-M6	2-M40x1,5	1-M16x1,5	83	167	167