

装有关速器时的容许转矩 Allowable Torque When Being With Reducer

- 减速器·中间减速器另售 Gearheads and decimal gearheads are sold separately.
- 减速器型号的□中为减速比的数值。Enter the gear ratio in the box(□) within the model name.
- 色表示与电动机同一方向运转，其他则为相反方向。Indicates the same rotating direction of the motor while the others rotate in the opposite direction.
- 转速是以电动机的额定转速为基准除以减速比而算出来的数值。实际转速将随负载大小变化而比所示数值减少2%~20%左右。
The speed is calculated by dividing the motor's synchronous speed by the gear ratio. The actual speed is 2%~20% less than the displayed value, depending on the size of the load.
- 希望以大于下表的减速比进行进一步减速时，可在电动机与减速器之间安装减速比为10的中间减速器。这时的容许转矩为3N·m
To reduce the speed beyond the gear ratio in the table, attach a decimal gearhead(gear ratio:10)between the gearhead and motor. In that case, the permissible torque is 3N·m.

容许力矩单位 Allowance Torque Unit: 上段 Upside (N.m) /下段 Belowside (kgf.cm)

型号Type	减速比 Gear Ratio	3	3.6	5	6	7.5	9	12.5	15	18	25	30	36	50	60	75	90	100	120	150	180	200
Z2D15-24GN	转速Speed r/min	1000	833	600	500	400	333	240	200	166	120	100	83	60	50	40	33	30	25	20	16	15
	2GN□K	0.11	0.13	0.19	0.23	0.29	0.34	0.48	0.58	0.69	0.87	1.04	1.25	1.74	1.89	2.36	2.83	3.0	3.0	3.0	3.0	3.0
		1.18	1.42	1.97	2.36	2.96	3.55	4.93	5.92	7.10	8.89	10.6	12.8	17.7	19.2	24.1	28.9	30	30	30	30	30

容许悬挂负载·容许轴向负载 Permissible Overhung Load and Thrust load

电动机(圆轴型)→201页 Motor(Round shaft type)→P201
减速器→201页 Gearhead→P201

减速器的容许负载惯性惯量J Permissible Load Inertia J of Gearhead

→201页 → P201

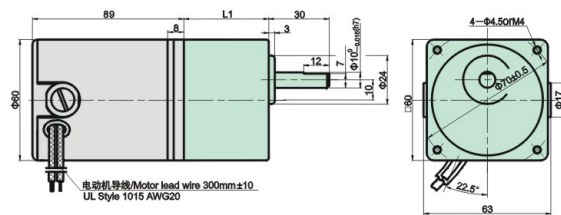
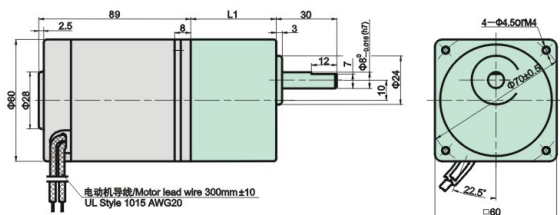
电动机型号 Motor model	减速器型号 Gearhead model	减速比 Gear Ratio	L1
Z2D15-12GN	2GN□K	3~18	32
Z2DW15-12GN			
Z2D15-24GN			
Z2DW15-24GN	25~200	41	
Z2D15-90GN			
Z2DW15-90GN			

外形图(单位:mm)Dimensions(Unit:mm)

减速器附有安装用螺丝 Mounting screws are included with gearhead.

◇导线型 Lead Wire Type

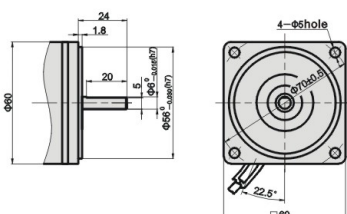
重量Weight:电动机Motor:0.9kg 减速器Gearhead :0.4kg



- 减速器型号的□中为减速比的数值
Enter the gear ratio in the box (□) within the model name

◇圆轴型的转轴部分 Shaft Section of Round Shaft Type

除重量及轴部外,电动机外形与齿轮轴型相同。
Excluding weight and the shaft section
Motor shape are the same as those of the pinion shaft



◇中间减速器 Decimal Gearhead

可安装在GN齿轮轴型上。
Can be connected to GN pinion shaft type
2GN10XK
重量Weight:0.24kg

