

REACTOR

20	
21	
22	
23	
24	
25	
26	
27	
28	
29	
30	



Description: SELECTOR SWITCH Wee

Material Code		PU	
TYPE	PT2C300	ZONE	
Drawing No.		ITCODE	
Drawing .Pos	-	QCTM No.	

1- Type:
 Maintained Pushbutton Push Button Pilot Light Unit Other: Selector Switch Wee

2- Work: Handy Program motor

3- Material: Metal Plastic Other:.....

4- Standards and Specifications:
 UL/CUL E44 653 IEC 947-5-1. DIN VDE 0660 Other:.....

5- Rated insulation voltage:
 Screw connection:.....600.....v Solder connection:.....600.....v

6- Conventional free-air thermal current:20.....A

7- Frequency :50/60..... Hz

8- Rated voltage Indicator light :-.....V DC AC

9- Lamp holder:.....-.....

10- Temperature:
- Ambient Working :-20.. ..°C to+60..... °C ;10.... to60..... %RH
- Storage: ...-25.....°C to+70..... °C

11- Degree of protection : IP40

12- Color lamp :.....-.....

13- Color case: BLACK

14- Contact type:
 3NO 1NC SPDT DPDT Other: BY NORMAL POS

Description: SELECTOR SWITCH Wee

15- Trait :

- Max voltage Proof Short Cut Power Supply Proof
 Max Speed For Contact :.....

16- Mounting:

- Flush Back Case Fix Of Panel Forward Case Fix Of Panel Angle Case Fix Of Panel

17- Weight:0.40.....Kg

18- Propellant : Selector Switch Wee spring return 3 POS 1- FWD 2- COM 3-REV

19- Accessories:

20- Drawing No: 011QMM780600(REV.0)

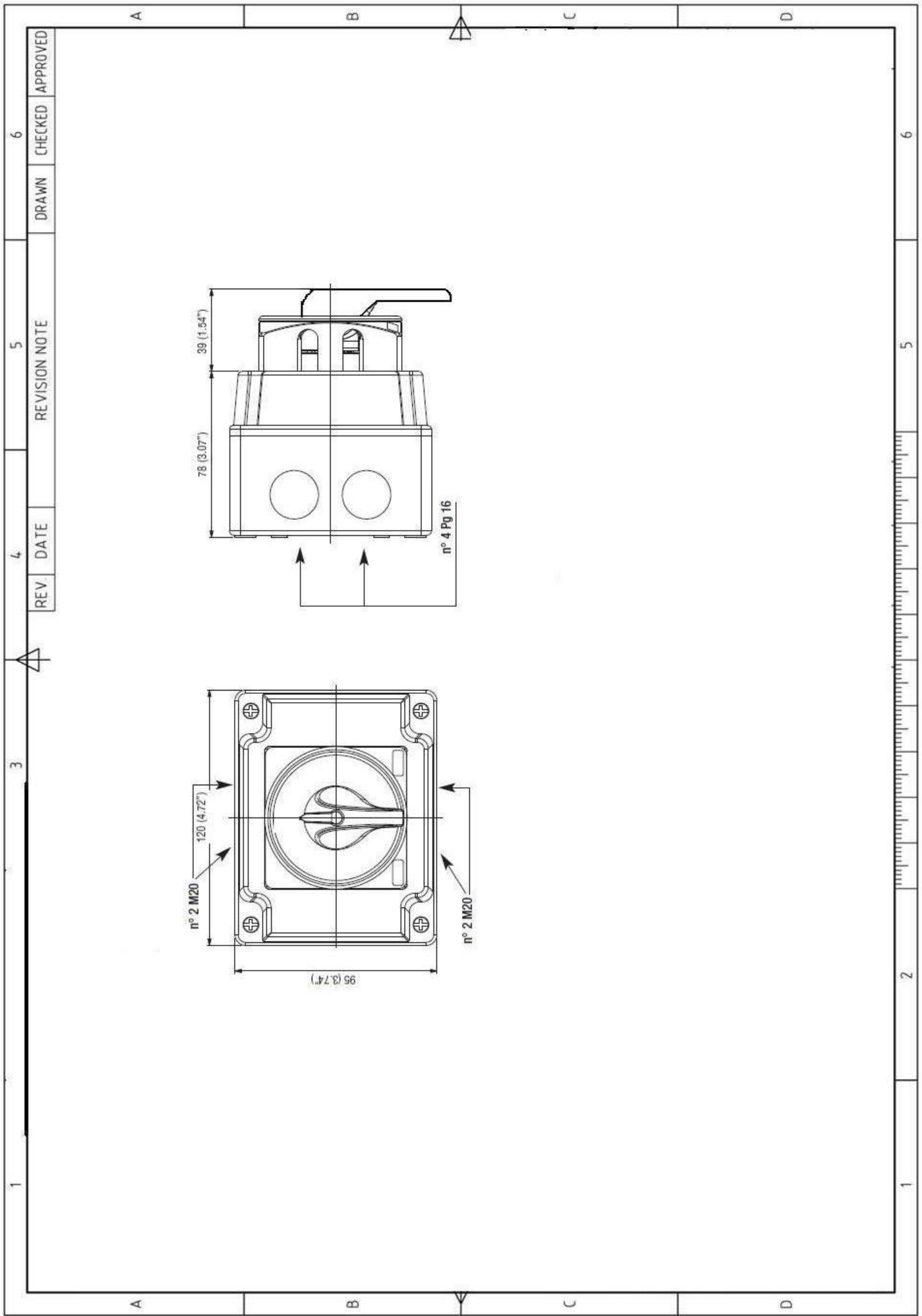
20- Manufacturers

Manufacturer	Part No/Type:
GENERAL ELECTRIC	PT2C300
GENERAL ELECTRIC	077S
BREMAS	CA0

21- Similar Type Material Codes:

Material Code	Manufacturer	Part No/Type:

22- Note :



REV	DATE	REVISION NOTE	DRAWN	CHECKED	APPROVED
4					
5					
6					

