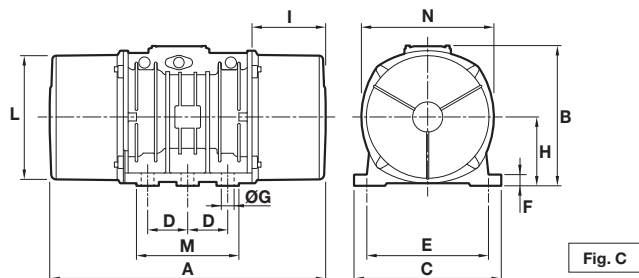
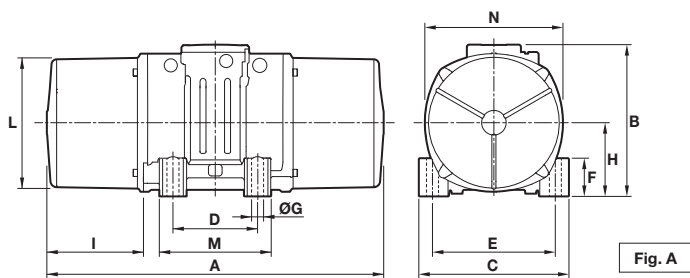


8 poles - 750/900 rpm

Three-phase

DESCRIPTION						MECHANICAL SPECIFICATIONS						ELECTRICAL SPECIFICATIONS					
Code	Type	Type (EU)	SIZE	 II2D Temp. class	Static moment*		Centrifugal force		Weight		Power Output		Max current		Ia/In		
					in-lbs	60Hz	50Hz	60Hz	50Hz	60Hz	50Hz	60Hz	50Hz	60Hz	400V 50Hz	460V 60Hz	50Hz
602568	MVSI 9-340	MVSI 075/150-S02	20	• 130°C	14.2	14.2	229	328	39.8	39.8	0.15	0.20	0.85	0.76	2.13	2.11	
602575	MVSI 9-590	MVSI 075/250-S02	30	• 130°C	24.9	24.9	398	572	57.6	57.6	0.25	0.28	1.10	1.05	2.03	2.29	
602615	MVSI 9-910	MVSI 075/400-S02	35	• -	39.7	39.7	634	913	71.7	71.7	0.28	0.34	0.81	0.80	2.22	2.38	
602616	MVSI 9-1160	MVSI 075/530-S02	35	• -	50.4	50.4	803	1162	79.2	79.2	0.28	0.34	0.81	0.80	2.22	2.38	
602609	MVSI 9-1440	MVSI 075/660-S08	40	• 120°C	62.9	62.9	1003	1443	96.8	96.8	0.28	0.35	1.20	1.20	2.38	2.58	
602610	MVSI 9-2030	MVSI 075/910-S08	50	• 120°C	88.0	88.0	1401	2017	123	123	0.29	0.40	1.40	1.30	2.38	2.85	
602618	MVSI 9-2920	MVSI 075/1310-S08	60	• 150°C	127	127	2028	2919	176	176	0.87	1.1	2.20	2.20	2.63	3.41	
602619	MVSI 9-3850	MVSI 075/1750-S08	60	• 135°C	168	168	2671	3843	202	202	1.0	1.2	2.60	2.26	2.78	3.04	
602891	MVSI 9-4640	MVSI 075/2110-S02	70	• 135°C	202	202	3219	4635	286	286	1.4	1.8	4.10	4.20	3.55	2.95	
602884	MVSI 9-6830	MVSI 075/3110-S02	80	• 135°C	298	298	4734	6818	414	414	2.0	2.0	5.40	5.20	3.98	4.62	
602515	MVSI 9-8400	MVSI 075/3800-S02	80	• 135°C	366	366	5819	8378	449	449	2.5	3.0	6.00	6.00	4.00	4.20	
602862	MVSI 9-9310	MVSI 075/4200-S02	90	• 135°C	405	405	6446	9280	524	524	2.7	3.2	6.50	6.50	3.84	4.00	
602826	MVSI 9-11700	MVSI 075/5300-S02	90	• 135°C	508	508	8078	11631	590	590	4.0	4.3	8.20	7.85	3.87	5.35	
602827	MVSI 9-14400	MVSI 075/6500-S90	95	□ 135°C	626	626	9957	14337	693	693	5.0	5.8	9.90	9.50	3.04	3.26	
602551	MVSI 9-14500	MVSI 075/6800-S02 Δ	97	□ 135°C	638	638	10155	14623	722	722	5.6	6.0	10.5	10.0	3.12	3.30	
602870	MVSI 9-21900	MVSI 075/10000-S02	97	□ 135°C	1077	954	17142	21861	964	922	7.1	8.5	13.2	12.0	3.33	3.92	
602863	MVSI 9-24800	MVSI 075/12000-S90	100	□ 135°C	1201	1079	19116	24717	1188	1144	7.6	8.7	14.0	13.5	3.72	3.78	
602871	MVSI 9-31000	MVSI 075/14000-S02	105	□ 135°C	1560	1348	24827	30879	1544	1496	10.2	11.0	21.0	19.5	4.99	5.44	
602872	MVSI 9-38000	MVSI 075/17000-S02	105	□ 135°C	1855	1658	29520	37979	1661	1564	11.9	12.7	22.0	20.0	5.50	5.90	
602873	MVSI 9-49000	MVSI 075/22000-S90	110	□ -	2490	2131	39611	48822	2233	2158	14.7	17.5	26.5	28.0	5.63	4.71	
602535	MVSI 9-57000	MVSI 075/26000-S90	110	□ -	-	2490	-	57039	-	2233	-	17.4	-	28.0	-	4.71	
602589	MVSI 9-67100	MVSI 075/30000-S02	120	□ -	4127	2908	65659	66616	3080	2816	25.0	-	43.0	-	6.00	-	

* Working moment = 2 x static moment. Δ For special application. □ CSA certification on request, with feeding line included.



DIMENSIONAL SPECIFICATIONS (inches)

Holes

Type	Fig.	A	B	C	D	E	ØG	N°	F	H	I	L	M	N	Cable entry thread
MVSI 9-340	A	13.54	7.99	6.57	4.13	5.51	0.51	4	1.18	3.25	3.66	5.71	5.75	6.30	M25X1.5
MVSI 9-590	A	15.51	8.31	8.07	4.72	6.69	0.67	4	1.77	3.68	4.17	6.69	6.85	7.17	M25X1.5
MVSI 9-910	A	17.13	8.82	8.07	4.72	6.69	0.67	4	1.65	4.11	4.63	7.36	6.38	7.99	M25X1.5
MVSI 9-1160	A	18.90	8.82	8.07	4.72	6.69	0.67	4	1.65	4.11	5.51	7.36	6.38	7.99	M25X1.5
MVSI 9-1440	A	19.69	9.61	9.06	5.51	7.48	0.67	4	1.77	4.57	5.28	8.15	7.48	8.86	M25X1.5
MVSI 9-2030	A	22.60	9.61	9.06	5.51	7.48	0.67	4	1.77	4.57	6.73	8.15	7.48	8.86	M25X1.5
MVSI 9-2920	A	24.29	10.71	10.83	6.10	8.86	0.87	4	2.76	5.12	6.97	9.37	8.27	9.96	M25X1.5
MVSI 9-3850	A	26.10	10.71	10.83	6.10	8.86	0.87	4	2.76	5.12	7.87	9.37	8.27	9.96	M25X1.5
MVSI 9-4640	A	26.22	12.64	12.20	6.10	10.04	0.93	4	3.03	6.18	7.01	10.91	8.46	11.61	M25X1.5
MVSI 9-6830	A	28.90	13.66	13.39	7.09	11.02	1.02	4	3.15	6.50	7.95	11.93	9.45	12.60	M32X1.5
MVSI 9-8400	A	31.34	13.66	13.39	7.09	11.02	1.02	4	3.15	6.50	9.17	11.93	9.45	12.60	M32X1.5
MVSI 9-9310	A	29.29	14.57	15.35	7.87	12.60	1.10	4	3.54	7.09	7.56	12.99	10.63	13.78	M32X1.5
MVSI 9-11700	A	33.07	14.57	15.35	7.87	12.60	1.10	4	3.54	7.09	9.45	12.99	10.63	13.78	M32X1.5
MVSI 9-14400	A	34.25	15.55	15.43	7.87	12.60	1.10	4	3.94	7.56	10.04	13.98	10.63	14.76	M32X1.5
MVSI 9-14500	C	33.94	17.20	18.11	4.92	14.96	1.54	6	1.38	8.46	9.06	15.24	12.60	16.30	M32X1.5
MVSI 9-21900	C	39.45	17.20	18.11	4.92	14.96	1.54	6	1.38	8.46	11.81	15.24	12.60	16.30	M32X1.5
MVSI 9-24800	C	42.13	17.87	20.87	5.51	17.32	1.77	6	1.50	9.06	11.02	16.65	14.57	17.64	M32X1.5
MVSI 9-31000	F	40.94	20.71	22.44	5.51	18.90	1.77	8	1.61	10.55	9.45	19.13	20.08	20.31	M32X1.5
MVSI 9-38000	F	44.09	20.71	22.44	5.51	18.90	1.77	8	1.61	10.55	11.02	19.13	20.08	20.31	M32X1.5
MVSI 9-49000	F	45.28	23.90	24.02	5.51	20.47	1.77	8	1.50	11.69	11.71	21.34	20.08	22.91	M32X1.5
MVSI 9-57000	F	45.28	23.90	24.02	5.51	20.47	1.77	8	1.50	11.69	11.71	21.34	20.08	22.91	M32X1.5
MVSI 9-67100	Q	52.17	25.55	27.56	5.51	23.62	1.77	8	1.77	12.60	14.57	23.62	20.08	25.98	M32X1.5

I_a/I_n = ratio between start-up current and maximum current.

Several sizes are available with different mounting bolt patterns. Please contact sales office at Italvibras.

