

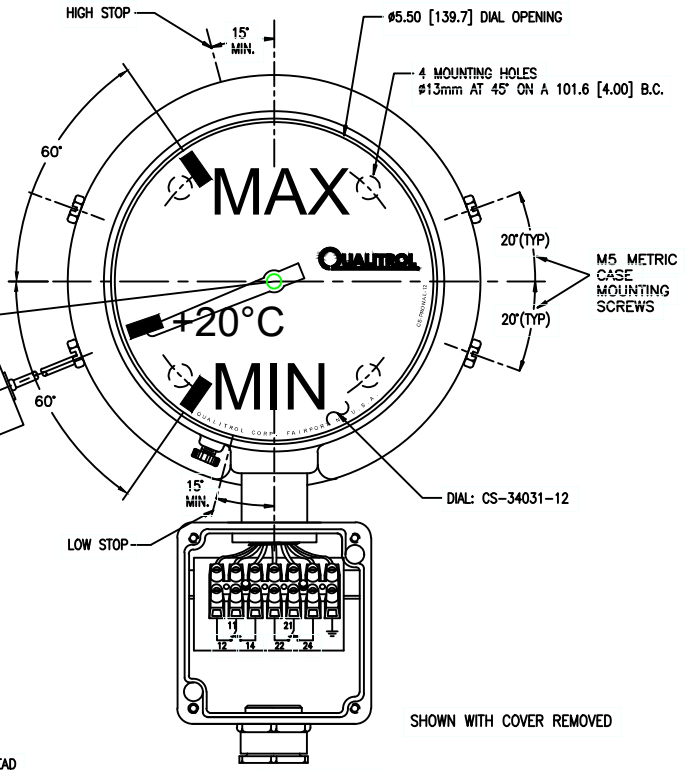
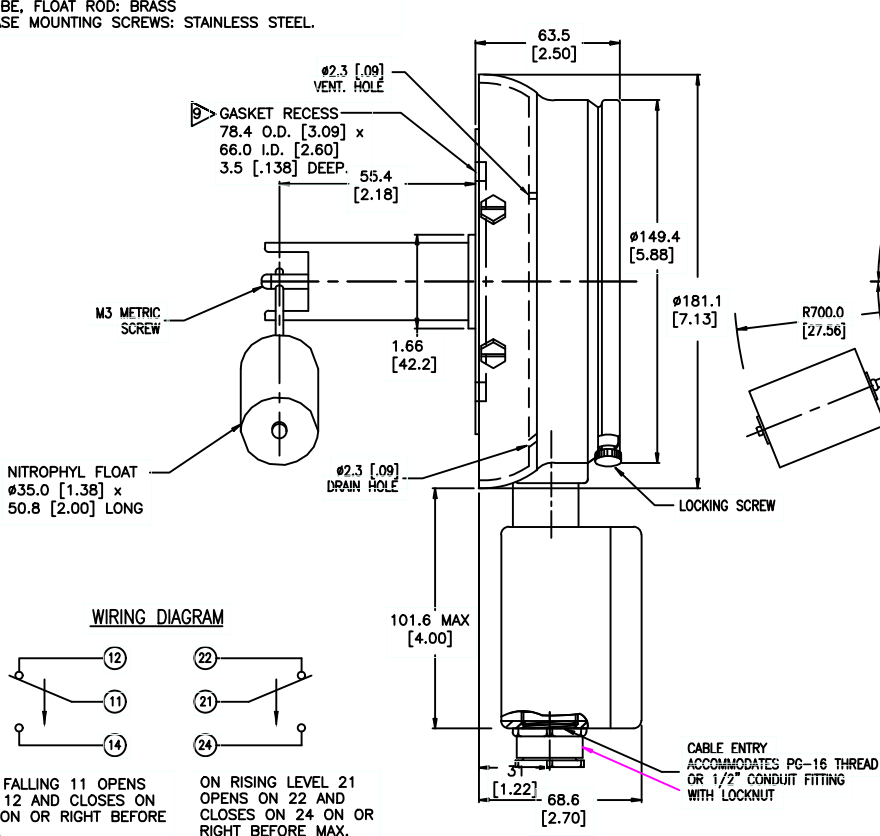
NOTE:
 THIS DRAWING IS THE PROPERTY OF QUALITROL CORPORATION AND IS LOANED ONLY ON THE CONDITION THAT IT SHALL BE USED TO FACILITATE THE PURPOSE FOR WHICH INTENDED AND NOT BE REPRODUCED, COPIED OR OTHERWISE DISSEMINATED OR AS NOT TO BE USED IN WHOLE OR IN PART FOR PROMOTIONAL, PROPRIETARY OR ANY OTHER PURPOSES WITHOUT THE WRITTEN CONSENT OF QUALITROL CORPORATION.

MODEL NO. 032-300-02 CS-34031

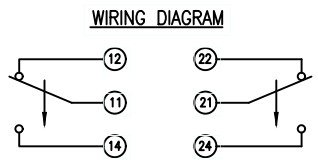
NOTE:

- 1.) ALL DIMENSIONS FOR REFERENCE ONLY AND ARE IN MILLIMETERS [INCHES].
- 2.) CASE ASSEMBLY: FREE BREATHING
- 3.) DIAL: YELLOW CHARACTERS ON BLACK BACKGROUND
 POINTER: YELLOW
- 4.) LENS: POLYCARBONATE
 CASE: ALUMINUM, PAINTED ASA 70 LIGHT GRAY EPOXY
 FLANGE: ALUMINUM SUPPORT
 TUBE, FLOAT ROD: BRASS
 CASE MOUNTING SCREWS: STAINLESS STEEL.

- 5.) ALL ANGULAR DEGREES SHOWN REFLECT FLOAT ROD TRAVEL.
- 6.) INSULATION TEST: 2000V TO GROUND FOR 60 SECONDS.
- 7.) FLOAT ROD: MUST EXTEND FROM COUNTERBORED SIDE OF SHAFT FLOAT LEADS POINTER BY $\underline{0}$.
- 8.) "TOP" STAMPED ON FLANGE.
- 9.) GASKET GROOVE FOR R37 O'RING.



SWITCH RATING:
 10A @ 125, 250, 480 VAC
 1/2A @ 125 VDC
 1/4A @ 250 VDC } NON INDUCTIVE



ON FALLING 11 OPENS ON 12 AND CLOSSES ON 14 ON OR RIGHT BEFORE MIN.
 ON RISING LEVEL 21 OPENS ON 22 AND CLOSSES ON 24 ON OR RIGHT BEFORE MAX.

-	8/7/01	ADDED FLAG AND NOTE 9	B
-	5/15/01	CORRECTED ENGLISH GASKET GROOVE DIM.	A
-	01/31/01	RELEASE	21914
LET	DATE	ALTERATION	C.N.

QUALITROL CORPORATION
 DIMENSIONS AND TOLERANCES IN ACCORDANCE WITH ASME Y14.5M-1994

PH. (716) 586-1515
 FAX (716) 377-0220
 1385 FAIRPORT ROAD
 FAIRPORT, NY 14450
 FORM 0-473 REV.C 7/1/97

TITLE: 6" LEVEL GAGE
MODEL NO. 032-300-02 CS-34031