

# Honeywell Sensing and Control



Where to buy ?

[Interactive Catalog Home](#)

[Product Family Information](#)

[Specification Search](#)

[Search Help](#)



*Representative photograph, actual product appearance may vary.*

- [▶ Dimensions](#)
- [▶ Available Terminals](#)
- [▶ BZ/BA Switch Performance Information](#)
- [▶ Specifications](#)

[Click here for a print friendly version of this datasheet.](#)

## BZ-2RQ18

**BZ Series Standard Basic Switch, Single Pole Double Throw Circuitry, 15 A at 250 Vac, Overtravel Plunger Actuator, 2,5 N - 3,61 N [9 oz - 13 oz] Operating Force, Silver Contacts, Solder Termination, CE, CSA, DEMKO,**

### Features

- Accepted world-wide standard "Large Basic" switch
- Low operating force and differential travel
- Long mechanical life up to 20,000,000 cycles at 95% survival
- Elongated mounting hole for easier, more accurate mounting
- Current rating ranges from 15 A to 25 A
- Choice of actuation, termination and operating characteristics

### Typical Applications

- Irrigation systems
- Semi-trailer trucks
- Timing devices
- Office equipment
- Test instruments
- Medical/dental equipment
- HVAC equipment
- Manually operated devices
- Valves

### Description

BZ/BA Series Standard Basic Switches are used for simple or precision on/off application needs.

#### Product Specifications

<b>Switch Type</b>	Standard 25,4 mm H x 17,8 mm W x 50,8 mm L [1.0 in H x 0.7 in W x 2.0 in L]
<b>Sealed</b>	No
<b>Ampere Rating</b>	15 A
<b>Circuitry</b>	Single Pole Double Throw (SPDT)
<b>Actuator</b>	Overtravel Plunger
<b>Termination</b>	Solder
<b>Operating Temperature Range</b>	-55 °C to 85 °C [-67 °F to 185 °F]
<b>Voltage</b>	250 Vac

<b>Approvals</b>	CE, CSA, DEMKO, UL
<b>Contact Type</b>	Silver
<b>Operating Force (O.F.)</b>	2,5 N - 3,61 N [9.0 oz - 13.0 oz]
<b>Release Force (R.F.)</b>	1,11 N [4.0 oz] min.
<b>Pretravel (P.T.)</b>	0,38 mm [0.015 in] max.
<b>Overtravel (O.T.)</b>	3,56 mm [0.140 in] min.
<b>Differential Travel (D.T.)</b>	0,01 mm - 0,05 mm [0.0004 in - 0.0020 in]
<b>Operating Position (O.P.)</b>	33,32 mm $\pm$ 1,14 mm [1.312 in $\pm$ 0.045 in]
<b>Material</b>	Plastic
<b>Housing Material</b>	General Purpose Phenolic
<b>High Temperature</b>	204 °C [400 °F]
<b>CE mark</b>	61058-1
<b>UL File #</b>	E12252
<b>CSA File #</b>	LR41370
<b>Agency Approvals and Standards</b>	1054
<b>Mounting Screw Size</b>	3,53 mm [0.139 in]
<b>Mounting Centers</b>	25,4 mm [1 in]
<b>Maximum Tightening Torque</b>	0,33 N m [3.0 in lb]
<b>Weight</b>	63,5 g [0.14 lb]
<b>Package Height</b>	24,1 mm [0.95 in]
<b>Package Width</b>	17,5 mm [0.69 in]
<b>Package Length</b>	49,3 mm [1.94 in]
<b>Recommended For</b>	Added overtravel, roller plunger for rapid cam (30 ° max) rise and slide operation, panel mount
<b>Availability</b>	Global
<b>UNSPSC Code</b>	30211905
<b>UNSPSC Commodity</b>	30211905 Snap switches
<b>Series Name</b>	BZ Series

*Due to regional agency approval requirements, some products may not be available in your area. Please contact your regional Honeywell office regarding your product of choice.*



# MICRO SWITCH

FREEPORT, ILLINOIS, U.S.A.  
A DIVISION OF HONEYWELL

FED. MFG. CODE 91929

# SWITCH - BASIC

CATALOG LISTING

## BZ-2RQ18-A2

### ALH1000

**BZ-2RQ18-A2**  
 PAGE 1 OF 1  
**M**  
 DRAWING NUMBER  
 7  
 ISSUE

REPLACES

RELEASE NO.

DRAWING NUMBER

ISSUE

CHECK

#### REVISIONS

A	CO17410	GCH	16 NOV 63
B	CO-73287-B	DHD	17 MAY 93
C	CO-77589	KDR	29 MAR 94
D	CO-82133		

23 AUG 05

RJ

CHECK

E

DLT

10 SEP 98

F

TSG

23 AUG 05

18 NOV '64

18 NOV '64

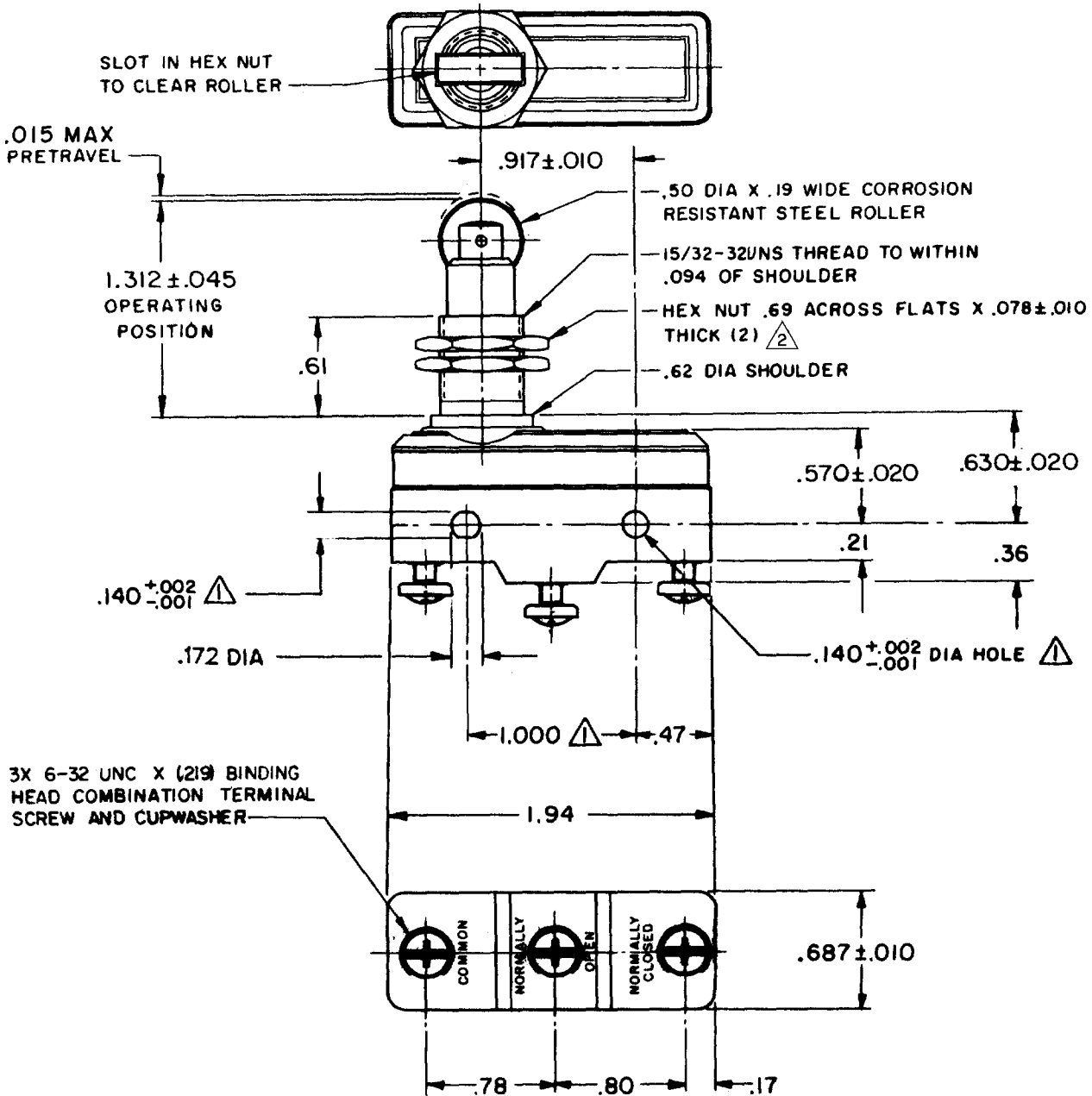
18 NOV '64

16 NOV 64

FORMTEK

FC-50376

DRAWN



#### NOTES

- $\triangle$  MOUNTING HOLES WILL ACCEPT PINS OR SCREWS OF .139 MAX DIA ON 1.000 ± .002 CENTERS
- $\triangle$  HARDWARE FURNISHED UNASSEMBLED

THIS DRAWING COVERS A PROPRIETARY ITEM AND IS THE PROPERTY OF MICRO SWITCH, A DIVISION OF HONEYWELL. THIS DRAWING IS NOT TO BE COPIED OR USED WITHOUT THE APPROVAL OF MICRO SWITCH.

#### CHARACTERISTICS

OPERATING FORCE ----- 9-13 OZ  
 RELEASE FORCE ----- 4 OZ MIN  
 DIFFERENTIAL TRAVEL --- .0004 - .0020  
 OVERTRAVEL ----- .140 MIN

#### ELECTRICAL DATA

CONTACT ARRANGEMENT  
 S P D T  
 -L96- 15 A-125, 250, OR 480 VAC  
 1/2 A-125 VDC; 1/4 A-250 VDC  
 1/8 HP-125 VAC; 1/4 HP-250 VAC  
 -L288-  
 -L306-  
 -L315-

EN 05 EC  
 T85 5E4

#### SCALE FULL

DO NOT SCALE PRINT

UNLESS OTHERWISE NOTED

DIMENSIONS ARE IN INCHES

#### TOLERANCES ARE:

ONE PLACE (.0) ± .030  
 TWO PLACE (.00) ± .015  
 THREE PLACE (.000) ± .005  
 ANGLES ±

WEIGHT