

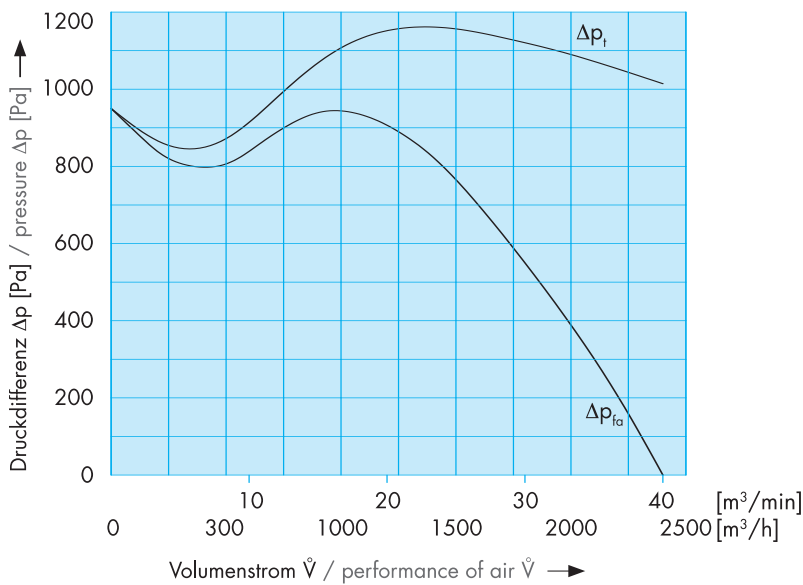
**DNG 7-52**

3-phasig

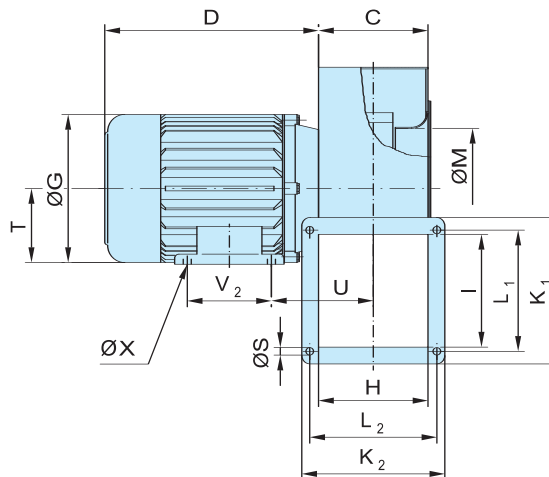
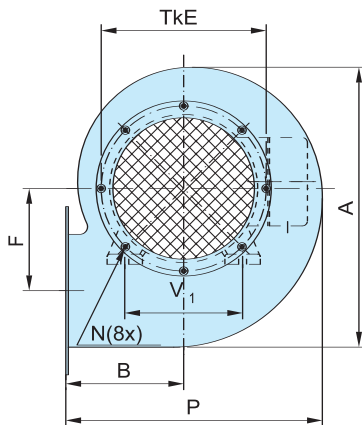
**max 2400 m<sup>3</sup>/h**  
**max 950 Pa**

|  |                                 |
|--|---------------------------------|
| <b>Volumenstrom / performance of air</b>   | <b>max 2400 m<sup>3</sup>/h</b> |
| <b>Druckdifferenz <math>\Delta P_{fa}</math> / pressure <math>\Delta P_{fa}</math></b> | <b>max 950 Pa</b>               |
| Motor-Nennleistung / power out   | 1500 W                          |
| Nennspannung / voltage   | $\Delta/Y$ 230/400 V            |
| Nennstrom / current  | 5,9/3,4 A                       |
| Nennzahl / speed   | 2840 min <sup>-1</sup>          |
| Frequenz / frequency   | 50 Hz                           |
| Schutzart IP / protection mode IP  | 55                              |
| Schalldruckpegel / noise level   | 81 dB (A)                       |
| Gewicht / weight   | ca. 26 kg                       |

ATEX-Ausführung,  
 siehe Rückseite  
 ATEX-Design,  
 see next page



**Abmessungen / Measurements**



|                |       |
|----------------|-------|
| A              | 333   |
| B              | 140   |
| C              | 130   |
| D              | 254   |
| E              | 196   |
| F              | 121,5 |
| G              | 178   |
| H              | 125   |
| I              | 130   |
| K <sub>1</sub> | 174   |
| K <sub>2</sub> | 170   |
| L <sub>1</sub> | 144   |
| L <sub>2</sub> | 151   |
| M              | 143   |
| N              | M5    |
| P              | 305   |
| S              | 9     |
| T              | 90    |
| U              | 121   |
| V <sub>1</sub> | 140   |
| V <sub>2</sub> | 100   |
| X              | 9,5   |

Ausgabe 01/2007

Technische Änderungen vorbehalten. Bei Druckfehlern wird keine Haftung übernommen. Abbildungen sind unverbindlich.  
 Changes to the technical progress are subject to carry out. Only the dates on the plate of the motor drive are binding.

**NIEDERDRUCK Ventilator 2-polig**  
**LOW-PRESSURE Fan 2-pole**

**ATEX-Ausführung / ATEX-Design II 2 G c T3**

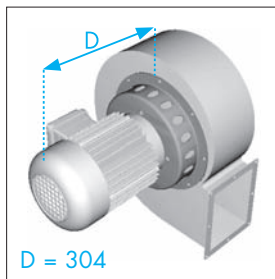
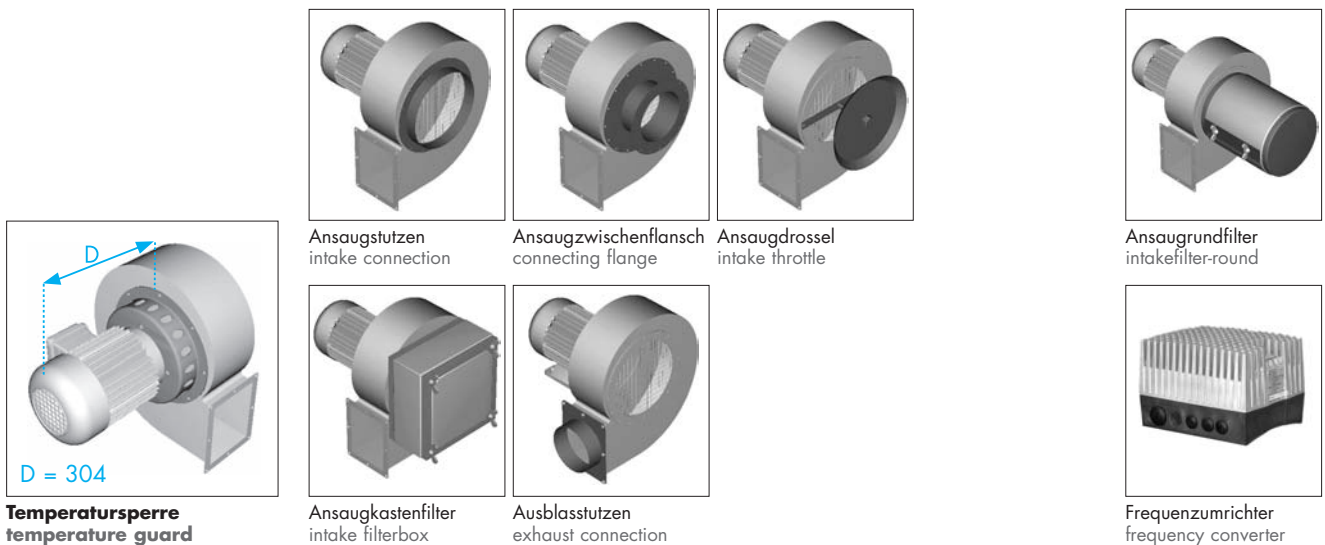
**DNG 7-52**

3-phasig

|                                      |                        |
|--------------------------------------|------------------------|
| Temperaturklasse / temperature class | T3                     |
| Motor-Nennleistung / power out       | 1500 W                 |
| Nennspannung / voltage               | $\Delta/Y$ 230/400 V   |
| Nennstrom / current                  | 5,74/3,3 A             |
| Nenndrehzahl / speed                 | 2860 min <sup>-1</sup> |
| Frequenz / frequency                 | 50 Hz                  |
| Schutzart IP / protection mode IP    | 55                     |
| Schalldruckpegel / noise level       | 81 dB (A)              |
| Gewicht / weight                     | ca. 20 kg              |



**Zubehör (Abmessungen ab Seite 367) / Accessories (Measurements from page 367)**



**Temperatursperre**  
temperature guard

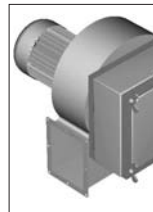
(Beschreibung siehe Seite 359)  
(Description see page 359)

Ansaugstutzen  
intake connection

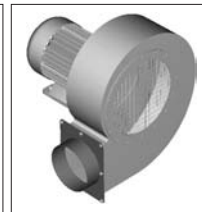
Ansaugzwischenflansch  
connecting flange

Ansaugdrossel  
intake throttle

Ansauggrundfilter  
intakefilter-round



Ansaugkastenfilter  
intake filterbox



Ausblasstutzen  
exhaust connection



Frequenzumrichter  
frequency converter