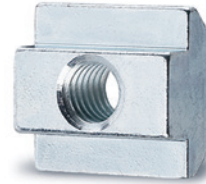
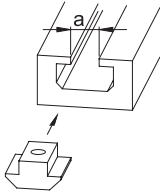
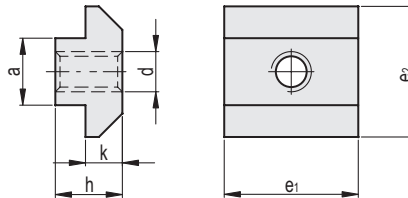


MATERIAL
Zinc-plated steel.

Application example



Conversion Table	
1 mm = 0.039 inch	
a	
mm	inch
8	0.31
10	0.39



Code	Description	a-0.1-0.3	d	e1	e2	h	k+0.1	⚖
GN.24601	GN 507-8-M4	8	M4	16	16	6	4.2	8
GN.24602	GN 507-8-M5	8	M5	16	16	6	4.2	12
GN.24603	GN 507-8-M6	8	M6	16	16	6	4.2	11
GN.24604	GN 507-8-M8	8	M8	16	16	6	4.2	10
GN.24611	GN 507-10-M4	10	M4	20	19.5	10.5	5.5	13
GN.24612	GN 507-10-M5	10	M5	20	19.5	10.5	5.5	12
GN.24613	GN 507-10-M6	10	M6	20	19.5	10.5	5.5	11
GN.24614	GN 507-10-M8	10	M8	20	19.5	10.5	5.5	10

- 1
- 2
- 3
- 4
- 5
- 6
- 7
- 8
- 9
- 10
- 11
- 12
- 13
- 14
- 15
- 16
- 17
- 18